

# encore

news from OSU theatre

# Autumn 06



↑ A scene from *The Cradle Will Rock*, a joint production with the Department of Theatre and the School of Music.

## inside



department of theatre  
*college of the arts*



Award-winning playwright, Carlyle Brown performs *The Fula From America* in OSU's Roy Bowen Theatre.



The Department of Theatre presents *The Rocky Horror Show* at CAPA's Southern Theatre in downtown Columbus.



Tom Postlewait receives the University Distinguished Scholar Award, one of the highest awards a faculty member can receive at Ohio State.

# Letter from the Chair

Dear Friends of OSU Theatre:

I just celebrated my first anniversary of being Chair for the Department of Theatre and look back over the 2005/06 academic year with great pride and much anticipation for an even more exciting future. This issue of *Encore* attempts to share with you some of the highlights of our year and to catch you up on the activities of our faculty, staff, students, alumni and friends.

In autumn 2005, we launched our new partnership with CAPA with a highly successful production of *The Rocky Horror Show*. Produced in the historical Southern Theatre, this show marked a further extension of the College of the Arts' commitment to bring the arts to downtown Columbus. As part of the department's commitment to Outreach and Engagement, the graduating class of ten Master of Fine Arts in Acting students wrote and performed *Hidden Voices*. This original work focused on the issue of domestic violence and was developed in partnership with Turning Point, a domestic violence shelter located in Marion, Ohio, forming the capstone experience for our graduating class. In spring quarter, we joined forces with the School of Music in presenting a production of Marc Blitzstein's *The Cradle Will Rock* for a nearly sold out run in the Roy Bowen Theatre. In addition to these three productions, we also produced *An Evening of Sam Shepard Shorts*, Gogol's *The Government Inspector* and Tony Kushner's *A Bright Room Called Day*. This eclectic season was seen by over 5,000 students and provided numerous opportunities for scholarship and learning.



Undergraduate students successfully established a chapter of the national theatre honorary *Alpha Psi Omega*, to further recognize student achievement. As has been the custom, a spring quarter banquet was held to distribute scholarships and academic achievement awards and to reflect on the busy past year. Many undergraduates participated in the Denman Research Forum in the spring and both Betsy Pandora and Tyler Sieple were awarded honors in the Arts and Architecture categories that day. Jen Schlueter received the Graduate Teaching Award, and faculty member Tom Postlewait was named a University Distinguished Scholar. Turning Point, our partner for the *Hidden Voices* project, was recognized with the Excellence in Community Partnership Building Award from the University Service Learning Initiative and the Organization of Chinese Americans Columbus Chapter honored the department with their Celebrating Diversity Award.

We hosted guests from South Africa, Korea, the United Kingdom, the Czech Republic and Romania. Performers and lecturers included: Robbie McCauley, Carlyle Brown, Dr. Harry Elam, Dr. Allan Munro and Ron Pitts of the Ujima Theatre. The Department of Theatre was formally recognized for our commitment to diversity during the Ohio State-Michigan State football game half-time ceremony.

When people ask me about how my move to the upstairs corner office has gone, I like to say that I still remain fundamentally a resource manager, just like any technical director. The key difference is that the resources I now work with are far more complex, significantly more demanding and produce achievements well beyond the scenic environments that I have had the pleasure of building these past many years. You have an important connection to our department and we couldn't do all that we do without your continued friendship and support. Enjoy this issue of *Encore* and let us know what you have been up to this past year.

Please be in touch,

Mark Shanda  
Chair/Professor

#### UPDATE 3/1/07

This edition of *encore* was intended for delivery in December of 2006. Due to a variety of setbacks in the production process, however, the delivery time was greatly delayed until now. We apologize for the inconvenience and thank you for your patience.

# Contents

## OSU Theatre 2006–2007 Season

**The Cone of Uncertainty:  
New Orleans after Katrina**  
with Guest Artist Jose Torres Tama  
September 29 & 30

**The Festival: A series of  
10-Minute Plays**  
November 2-17

**Hair**  
by Gerome Ragni, James Rado and  
Galt MacDermot  
November 16- 22

**The Three Bully Goats Griff**  
by Patrick Rainville Dorn  
February 2-4

**Our Town**  
by Thornton Wilder  
February 8-24

**Dead Man Walking**  
by Tim Robbins  
February 22-March 3

**The Children's Hour**  
by Lillian Hellman  
May 3-19

**Mary Stuart**  
by Friedrich Schiller  
May 17-20

**Aristophanes' The Birds,  
A Video Response**  
A joint production as part of the 2007  
Prague Quadrennial  
April 22-27

2005–06 Season in Review	4
Guest Artists and Scholars	6
Outreach and Engagement	8
TRI Report	10
Spotlight on Students	11
Regional Campus Reports	14
Faculty and Staff Updates	16
Alumni and Friends	19
South Africa	25
Carnival	26
Port Clinton	26
Celebration of Roy Bowen	27
Thomas Postlewait: Distinguished Scholar	27
The Ten	28
New Faces	29

## encore

is an annual newsletter of  
**The Ohio State University**  
**Department of Theatre**  
1089 Drake Center  
1849 Cannon Drive  
Columbus, Ohio 43210-1266  
614.292.5821  
fax 614.292.3222

**Editor-in-Chief:**  
Mark Shanda

**Editor:**  
Damian Bowerman

**Contributors:** Joe Brandesky, Joseph Fahey,  
Beth Josephsen, Beth Kattelman, Eric H. Mayer,  
Jayson Morrison, Betsy Pandora, Robin Post,  
Chris Roche, Megan Schutt, Tyler Seiple,  
Jennifer Stoessner, David Williams, Alan Woods

**Design/Layout:**  
Greg Bonnell

Written and researched by the Faculty,  
Staff and Students of the Department of  
Theatre.

All Alumni and Friends information is  
collected from Alumni, Friends and other  
readers, gathered and processed at the  
Department of Theatre, researched,  
edited and placed either in our *encore*  
publication or the Alumni page of *encore*  
on our website:

theatre.osu.edu

# Season

## 2005-06 season in review

### **An Evening of Sam Shepard Shorts**

#### **Cowboy Mouth**

By Sam Shepard. Mount Hall Studio Theatre. Directed by Blair Wing. Scenic and Costume Designs by Jacqueline M. Seals. Lighting Design by Matt Hazard. Sound Design by Curtis "Nitz" Brown. Stage Manager Johnnyko.

Nov 3-15, 2005.

#### **Icarus's Mother**

By Sam Shepard. Mount Hall Studio Theatre. Directed by Nicholas Dekker. Scenic and Costume Designs by Jacqueline M. Seals. Lighting Design by Matt McCarren. Sound Design by Curtis "Nitz" Brown. Stage Manager Johnnyko.

Nov 3-15, 2005.

### **The Rocky Horror Show**

By Richard O'Brien. Southern Theatre.

Directed by Mandy Fox. Scenic and Lighting Designs by Daniel Matthews. Costume Design by Mary Elizabeth Yaw. Sound Design by James Knapp. Stage Manager Eric H. Mayer.

Nov 17-22, 2005.

### **Hidden Voices: A collaborative new work with community partners**

Created by the 2006 Masters of Fine Arts Acting Class. Roy Bowen Theatre. Directed by Valerie Kaneko Lucas. Scenic Design by Dan Gray. Costume Design by Lindsay Simon. Lighting Design by Jason Banks. Sound Design by Katie Phillips. Video Projection Design by Blair Wing. Counter Programming and Design by Fran Kalal. Stage Manager Sarah Helgesen.

Feb 9-19, 2006.

### **The Government Inspector**

By Nikolai Gogol. Thurber Theatre. Directed by Beth Kattelman. Scenic Design by Hannah Rosner. Costume Design by Crystal Herman. Lighting Design by Russ Blain. Sound Design by Laura Jack. Stage Manager Lindsay Beery.

Feb 23-Mar 4, 2006.

### **Escuela del Mundo**

By Catherine Filloux. Mount Hall Studio Theatre. Directed by Kimberly Dachel. Scenic Design by Dan Gray. Costume Design by Katie Kimmel. Lighting Design by Jordan Kardasz. Sound Design by Curtis "Nitz" Brown. Stage Manager Mandalyn Stevens. Tour Manager Jayson Morrison.

March 3-5, 2006.

### **The Cradle Will Rock, a joint production with the OSU School of Music**

By Marc Blitzstein. Roy Bowen Theatre. Directed by Karen Coe Miller. Music Directed by Barbara Brenton Sahr and Edward Bak. Scenic Design by Dan Matthews. Costume Design by Mary Elizabeth Yaw. Lighting Design by Gregory L. Owen. Sound Design by Eric M. Slezak. Stage Manager Allison Walker.

May 10-20, 2006.

### **A Bright Room Called Day**

By Tony Kushner. Thurber Theatre. Directed by Maureen Ryan. Scenic and Costume Designs by Jacqueline Seals. Lighting Design by Jason Banks. Slide Design by Adam Rex. Sound Design by Curtis "Nitz" Brown. Puppet Design by Jennifer Stoessner. Stage Manager Emily Thiel.

May 18-26, 2006.



## AfterWords

This year the following individuals shared their knowledge and insights at our post-performance discussions.

#### ***An Evening of Sam Shepard Shorts***

Gibson Cima, M.A. Theatre Student

#### ***The Rocky Horror Show***

Frank Lasik, M.A. Theatre Student

#### ***Hidden Voices***

Jason Bush, Ph.D. Theatre Student, and guests

#### ***The Cradle Will Rock***

Christopher Purdy, WOSU FM

#### ***A Bright Room Called Day***

David Dennis, Department of History Graduate Student



2



3



5



6



7



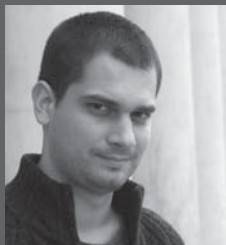
8

**PHOTOS**

- |                            |                            |
|----------------------------|----------------------------|
| 1 A Bright Room Called Day | 5 The Government Inspector |
| 2 Cowboy Mouth             | 6 Hidden Voices            |
| 3 The Cradle Will Rock     | 7 Icarus's Mother          |
| 4 Escuela del Mundo        | 8 The Rocky Horror Show    |

# Guest Artists

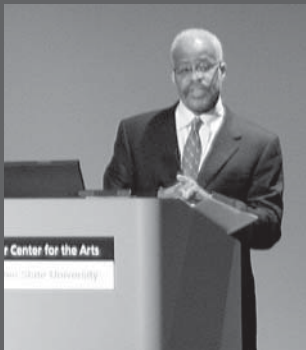
By **Robin Post**, M.F.A. 2006



ArtsLink fellow  
Alexandru Berceanu.



Peter Cutts strikes a suggestive chord with his hand organ as the Narrator in *The Rocky Horror Show*.



Harry Elam presents his lecture *August Wilson and the Doing and Undoing of History*.



Carlyle Brown appearing in *The Fula From America*.



Eric Colleary (B.A. 2003), Guest Artist Clary Salandy, undergraduate Katie Kimmel and Guest Artist Ruth Tompsett catch up during their visit in January. Eric participated in the 2003 London Theatre Program and the Notting Hill Gate Carnival and Katie participated in the 2005 program.



Robbie McCauley demonstrates a day in the life of a diabetic in her show, *Sugar*.

Romanian director and translator **Alexandru Berceanu** visited the Department of Theatre for a month during the fall quarter. Alexandru was a member of the CEC ArtsLink Partner's Program which supports the collaboration of artists and organizations between the U.S. and Central or Eastern Europe. While researching contemporary directing approaches in the US, Alexandru offered his insights during the production processes of both *The Rocky Horror Show* and *Hidden Voices*.

**Peter Cutts**, solo performer and artistic director of the London company, Offcuts, joined the Department of Theatre as a Guest Artist. Peter taught directing to undergraduate students majoring in theatre and performed in *The Rocky Horror Show*.

Theatre arts career consultant **David Diamond** presented his workshop, *Directing Your Career*, to theatre students in autumn 2005 providing countless resources and advice for navigating a career.

The Department of Theatre and The Office of Minority Affairs Presented **Harry J. Elam, Jr.**'s guest lecture, *August Wilson and the Doing and Undoing of History* February 2, 2006 at the Wexner Center Film/Video Theater. Harry J. Elam, Jr. is the Olive H. Palmer Professor in the Humanities; the Robert and Ruth Halperin University Fellow for Undergraduate Education; Professor of Drama; Director of the Institute for Diversity in the Arts; and Director of the Committee on Black Performing Arts at Stanford University as well as the Chair of the Stanford Drama Department.

In winter 2006, highly acclaimed playwright **Carlyle Brown** performed his solo work, *The Fula from America*, a play based on his travels through West Africa. Carlyle came to OSU as the Thurber Playwright-in-Residence and taught a course in playwriting.

In autumn 2005, physical comedian **Robert Post** taught students the art of improvisation. Robert was the co-developer of the spring 2005 production of *Vaudeville*.

In fall 2005, Carnival scholars **Clary Salandy** and **Ruth Tompsett** presented London's Notting Hill carnival experience. Twenty-three graduate and undergraduate students attended the London program during summer 2005 and participated in the carnival. Students worked as interns for Clary's carnival company, *Mahogany*, helping to build the costumes and donning them during the carnival parade. Megan Schutt, Richard Smith and Katie Kimmel documented the process for research material for a planned interactive museum exhibit.

Award-winning African-American playwright and performer **Robbie McCauley** presented her solo work-in-progress, *Sugar*, January 13-14, 2006. *Sugar* examined McCauley's struggle and survival with diabetes as connected to slavery, war, work, romance and food. The performance and her 12 day residency were presented by The Departments of Geography and Theatre.

# and Scholars

As the Lawrence & Lee Theatre Research Institute's Annual Lecture Series, **Alan Munro** (Ph.D. 1996) presented his paper, *The Theatre Of Research, Or The Research Of Theatre: Explorations in the dynamics of research in the arts in South Africa*, in October 2005. Munro also taught Honors Introduction to Theatre and a Graduate Seminar on South African Theatre.

The Chicago based experimental and new work company **The Neo-Futurists** performed in the winter 2005. Company member Dean Evans is an Ohio State undergraduate alum. Neo-Futurist theater is, by definition, dedicated to personal honesty, shared community and financial accessibility. The company members held an open discussion on their process and history following the performance.

**Anthony Rapp**, Mark in the original Broadway version and the recently released movie *RENT*, held a Master Class with theatre majors in May 2006. He also had a public lecture with OSU Students.

Guest director **Karen Coe Miller**, co-founder of the New Music-Theater Ensemble, directed the joint production of *The Cradle Will Rock* in spring 2006.

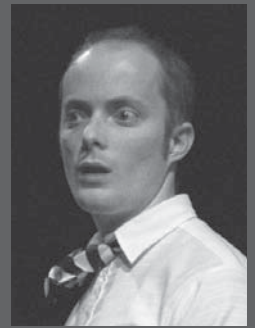
Through a special arrangement with the Columbus Association of Performing Arts (CAPA), **Lynn Redgrave, Miriam Margolyes, Charlotte Parry** and **James Waterston** visited with theatre students in March 2006 for a special discussion / Q & A. The group was in Columbus performing at the Southern Theatre in *The Importance of Being Earnest*, directed by Sir Peter Hall.

**Luke Yankee** grew up in the midst of showbiz history and came to town to "dish" about the major divas in his life. Yankee visited the Department of Theatre to present his one-man show, *Diva Dish*, a loving tribute to his mother, Oscar-winning actress Eileen Heckart. The masterful storyteller presented three performances of the celebrity gossip-filled *Diva Dish* in April 2006, in the Roy Bowen Theatre.

*Diva Dish* is a multi-media theatrical event that includes behind-the-scenes tales of stars like Marilyn Monroe, Marlene Dietrich, Ethel Merman, Lyndon B. Johnson, Sophia Loren, Bette Davis, Joan Crawford, Carole Channing and many more, accompanied by video clips and photos. Yankee is an actor and director who lives in Los Angeles, Palm Springs and New York, and created *Diva Dish* after his mother died two years ago. Eileen Heckart, Oscar, Emmy, Tony and Golden Globe winner, grew up in Columbus and graduated from Ohio State's Department of Theatre. She received an honorary doctorate from the university and returned as a guest artist for several productions at OSU. She also is a major contributor to the Lawrence and Lee Theatre Research Institute, which possesses all of her papers and manuscripts. The production of *Diva Dish* served as a benefit for the Eileen Heckart Memorial Scholarship Fund, which provides books and supplies for OSU theatre students in need.



Allan Munro presents his lecture, *The Theatre Of Research, Or The Research Of Theatre: Explorations in the dynamics of research in the arts in South Africa*.



Dean Evans in a scene from *Too Much Light Makes the Baby Go Blind*.



Guest Director Karen Coe Miller.



Anthony Rapp chats with students about his experience in the original cast of *RENT*.



(L-R) Lynn Redgrave, James Waterston, Charlotte Parry and Miriam Margolyes engage with students during a discussion about their work in Sir Peter Hall's production of *The Importance of Being Earnest*.



Luke Yankee signs a copy of his new book, *Just Outside the Spotlight*, at the reception following his performance of *Diva Dish*.

# Outreach and

By **Valerie Kaneko Lucas**, Department of Theatre and OSU Extension State Specialist in the Arts

The vision of the OSU Extension and OSU Theatre Partnership is to develop a mutually beneficial and sustainable artistic relationship between Extension and the College of the Arts which is responsive to the needs of both partners and engages with the needs of diverse communities in Ohio.

In October 2005, **Theatre 2 Go** performed *Misperceptions* and *The Team from Hell*, sketches about the challenges of collaboration and team-working at the OSU Extension Urban Conversation conference in Columbus. In November, *Eat This: an American Montage*, a sketch about food and cultural diversity was performed at the Tri-State Food and Diversity Conference in Cincinnati. In January 2006, the troupe performed *The Karns Step Out* and *The Farmer Blues*, sketches about the potential of the arts for agritourism, at the Direct Marketing Conference in Columbus.



Theatre 2 Go at one of their many venues.



Two scenes from *Escuela del Mundo*, winter 2006.



**Escuela del Mundo**  
By **Jayson Morrison**, M.A. Student

The Department of Theatre, with the support of the Office of International Affairs, brought *Escuela del Mundo* to middle schools and high schools throughout central Ohio. The seven member cast, stage manager and tour manager visited schools as close as the North Welcome Center in Clintonville and as far away as St. Peter's High School in Mansfield. Following the tour, the play was performed during the first weekend of March at the Mount Hall Studio Theatre.

The play, written for OSU Theatre by Catherine Filloux, was originally performed during winter 2005. This year's production, directed by Kimberly Dachel, was remarkably different from last year's as it used a non-realistic presentation style to further open the play for discussion among students. An essential element of each showing included a question and answer period where spectators asked the actors questions on topics such as violence in school, xenophobia, racial and religious intolerance and the United States' declining reputation within the world community. All of these issues were addressed in the production and were very relevant to the lives of the students as the actors discovered while on tour. According to Alicia Ritchey, who played Rose, after one production "A teacher told us that some students came forward to let her know that one of their peers had been making threatening comments and drawing violent pictures. It had been going on for weeks and they finally got the courage to tell a teacher because of the play."

Valerie Lucas developed **DramaTies: Drama for Education Workshops**, funded by an OSU Cares Grant to teach basic skills of theatre-making to youth group leaders and camp counselors. The participants, in turn, used these skills for their local groups.

In October 2005, an intensive training day in using drama at after-school clubs was held. In December 2005, an intensive training day for camp counselors and youth leaders was offered.



DramaTies participants and their puppets.

Students rehearse a scene for DramaTies.





# Engagement

By **Valerie Kaneko Lucas**, Department of Theatre and OSU Extension State Specialist

## Hidden Voices

*Hidden Voices* was the department's first M.F.A. Community Outreach and Engagement production. As part of the Master of Fine Arts in Acting program, ten graduate students had an intensive training in artistic collaboration with community groups. The production was the result of over 8 months' work with community partner, Turning Point Domestic Violence Shelter and Counseling Service in Marion, Ohio. With the help of Paula Roller (Executive Director), Paula Burnside (Programs Director) and Lindsey Winfield (Residents Coordinator), the M.F.A.s worked as interns at Turning Point, where they ran expressive arts workshops with the residents and their families. From these shared stories and moments, a new work was devised, giving voice to the diverse experiences of men, women and children affected by domestic violence. Turning Point received the Excellence in Community Partnership Building Award, sponsored by The Ohio State University Service-Learning Initiative, for their role in this project.



Megan Schutt and Tanya McBride in a scene from *Hidden Voices*.



Lise Evans investigates a metaphoric box in a scene from *Hidden Voices*.

## My Experience with *Hidden Voices*

By **Megan Schutt**, M.F.A. 2006

The project that became *Hidden Voices* was an amazing experience for the M.F.A. Acting Class. We started our work by learning about community based theatre in spring 2005. After exploring several potential collaborators, we found a partner that seemed as excited about the possibility of collaboration as the development team. It was a domestic violence shelter in central Ohio called Turning Point. In the autumn, we created and conducted creative workshops with residents at the shelter. We then took what we discovered as inspiration for the creation of a full length script. I played Mary, a single mother who ends up in an abusive relationship with her partner, Nessa.

One of the most challenging things about taking the work we did from the workshops and placing it onstage was the great sense of responsibility for these people's stories. I've never done work where you create a dramatic event out of someone else's experience. During this entire process, I felt that I had to succeed or it would be a disservice to those who had trusted me with their stories. As an actor, I experienced stage fright to a degree that is rare for me. I was particularly self-conscious when people from the commissioning body were in the audience. I felt there was more at stake for me than when I generally perform. I was glad it meant so much to me, and found the entire process invigorating creatively. I want to do theatre I care this much about all the time. This made me think about my future as an artist and how I want to continue exploring community based collaboration and creation.

## Class Act

By **Mark Shanda**, Chair and Professor

Once again the department showed its continued support of teaching excellence by investing in Class Act and a Faculty and Teaching Associate Development (FTAD) Teaching Fellow. Class Act is the interactive theatre ensemble that works with client groups around campus to illuminate academic policy and improve classroom teaching. The Class Act troupe performed at

the university wide graduate teaching associate training event in September, bringing policies and practices associated with academic misconduct, student records, disability services and diversity training to the attention of all new GTAs on campus. This highly successful program brings to life, difficult issues in a unique and interactive manner.

# The Jerome Lawrence and Robert E. Lee Theatre Research Institute Report

By **Nena Couch**, Professor and Curator,  
Lawrence and Lee Theatre Research Institute

The Jerome Lawrence and Robert E. Lee Theatre Research Institute's 2005-2006 year featured some outstanding new acquisitions. The Institute received a major gift from Professor **Jarka Burian**, the leading American scholar of Czech theatre, who donated his extensive research files, posters, professional library of books, journals and scholarly writings. Along with significant collections of Czech design material acquired over the past several years through the good agency of OSU Lima professor **Joe Brandesky**, the Institute is now the major repository for material on modern Czech theatre in North America. Sadly, Dr. Burian passed away shortly after making the gift, so the Burian Collection has become a memorial one, preserving his research legacy. Grayce Burian has been incredibly generous in extending help with the materials, even during the time of mourning Dr. Burian's passing.

• • •

**Doreen Stouffer Kuhl** donated an outstanding library of rare theatre books and playbills collected by her late husband **Lawrence Wm. Kuhl**, as well as some fascinating correspondence and other materials on Irish playwright **Lennox Robinson** who was a colleague and friend.

• • •

**Anne Bowen Paule** donated papers and materials of her father, **Roy H. Bowen**, to add to his already established collections. We miss Roy, but are honored to be able to preserve a part of his legacy to the OSU Department of Theatre and to Columbus theatre.

• • •

**Joan Faroughy** donated original costume, scene and poster designs by renowned Romanian director/designer **Mircea Marosin**. In person and on the phone with **Lesley Ferris** and **Nena Couch**, Mr. Marosin has generously shared his vision of "a scenic environment permanently ready to reflect, to participate, to be receptive and to comment on the rapport which relates the actor to the stage."

• • •

Designer and artist **Gordon Micunis**, whose wonderful *Madame Butterfly* scene design was featured in the spring 2005 exhibit, *Design for the American Stage: Treasures from The Ohio State University's Jerome Lawrence and Robert E. Lee Theatre Research Institute*, donated designs including his clever costume and set designs for a Guthrie Theatre production of *The Venetian Twins*. He is also working on cataloging thousands of slides documenting his theatre design work.

• • •

Other wonderful additions to the art collections include a scene design and posters by **Jaroslav Malina**; an oil painting by **Boris Anisfeld** from his grandson, **Charles Chatfield-Taylor**; drawings by **Mathias Armbruster** from **Leeann Faust**; 19<sup>th</sup>-century theatre prints from **Fredric Woodbridge Wilson**; models by designer **Tony Straiges**; a scene design by **Lester Polakov** from **Louise Guthman**; and costume designs by **Susan Branch** from **Paul Stiga** as well as a prop by **Red Grooms** – a painted snake (that box was a shock to open!) We would like to thank Institute friend **Marina Henderson** for her valuable assistance in building the design holdings.

• • •

Strollers/Scarlet Mask established its archive at TRI, and graduate student **Adrian Brown** enjoyed processing it, finding not only treasures from the organization's early years, but also a picture of himself in production.

• • •

Playwrights **Caridad Svich**, **Catherine Filloux**, **Don Nigro**, **Chiquita Mullins Lee** and **Larry Loebell** added to their collections this past year, as did members of the International Center for Women Playwrights.

• • •

Critics/writers **Hollis Alpert**, **Alice Carter**, **Holly Hill**, **Jeffrey Eric Jenkins** and **Martin F. Kohn** established, or added to, their collections and the American Theatre Critics Association sent the annual membership reviews to add to the archive. Theatre historians

have enriched the collections this year: **Mary Henderson** donated the extensive research files which she used for her outstanding book, *Mielziner: Master of Modern Stage Design*.

**M. Glen Wilson** has donated the manuscript of his detailed biography of **Charles Kean** as well as extensive research materials on the actor's life and career.

It is wonderful to have the research work come home as Glen's fascination with Kean began during a seminar with **Dr. John H. McDowell** here some four decades ago.

• • •

We're also grateful to **Clifford Ashby**, **Abe Bassett**, **Fred Blumberg**, **Joan Campbell**, **Marvin Carlson**, **Harold** and **Anita Eisenstein**, **Lesley Ferris**, **Carter** and **Joanne Jastram**, **Randy Kaplan**, **Antonia Sophia Krueger**, **Charles H. McCaghy**, **Frank** and **Claudia Mohler**, **Randy Skinner**, **Julia Weiss**, **David L. Woods** and **Luke Yankee** for continuing donations of theatrical programs, books, slides, photographs and other materials.

• • •

A new play was given a staged reading at Ohio State's New Works Lab on Sunday, June 18<sup>th</sup>, 2006. Missouri playwright **Sherry Kramer's** *When Something Wonderful Ends: a history* is described as a one woman, one Barbie play. Veteran Central Ohio performer **Barbara Yost** performed the play. "Kramer's play traces the history of American involvement in the Middle East through one woman's growing up and collecting Barbie dolls," says **Alan Woods**, Director of the TRI.

• • •

As part of the University Libraries' "Read Aloud" program, staff from the Theatre Research Institute (TRI) read a script from the Lawrence and Lee CBS Radio Series "Young Love" on May 25<sup>th</sup>, 2006 in the Thompson Library. "Young Love" was aired for two seasons, 1949 and 1950. It was set at "Midwestern University," a fictional university which featured a major football team, a central gathering place called the Oval, and a pond

# Spotlight on Students

for ducks called Mirror Lake. It was about a young couple, Jimmy and Jan, who were secretly married—in days when undergraduates at most universities were not allowed to be married. The episode that was read originally aired on August 22, 1949; titled “Maudine Ormsby,” is based on the actual election in 1926 at Ohio State of a cow named Maudine Ormsby as Homecoming Queen.

• • •

The Margo Jones Award administered by the TRI was presented in the fall of 2005 to playwrights **Christopher Durang** and **Marsha Norman** in recognition of the Playwrights Program which they run at the Juilliard School.

• • •

This has been a year of staff enrichment at TRI. Thanks to the extraordinary generosity of **Jerome Lawrence**, who left a significant bequest to TRI, the position of Associate Curator was created. Our own **Beth Kattelman**, who received her Ph.D. here and later completed the MLIS at Kent State University, was selected in a national search to fill the position. Last fall, the TRI staff welcomed **Orville Martin**, most recently from the Eisenhower National Clearinghouse and previously from OSU Libraries. **Kathleen Kopp** continues her work with the TRI’s art holdings, while both **Anca Galron** and **Joan Wells** are here several days a week as cataloguers. Our 2005-2006 staff included graduate assistants **Gina DiSalvo** and **Adrian Brown**, and undergraduates **Anait Grigoryan**, **Adam Gunning**, **Adrienne Johnson**, **Brittany Nau**, **Doreen Salkiewicz**, **Ian Smith** and **Lesley Dow**. **Dean Capper** from the School of Music continues his work with the Irwin Spector and Hilda Schuster collections, and **James Collingsworth** returned for a second year as our Columbus Alternative High School intern. We remain grateful to our wonderful volunteers: **Barb Yost**, **Chuck Moulton** and **Joey Thomas**.

By **Eric Mayer**, Undergraduate Studies Coordinator, B.A. 2003 and **Damian Bowerman**, Graduate Studies Coordinator, M.F.A. 2006

Undergraduate and graduate students continued to raise the bar during the 2005-2006 academic year through the creation of new works, conference presentations, and creative and research activities.

Undergraduates welcomed Assistant Professor **Mandy Fox** as the Director of Undergraduate Studies and started the year off on the banks of the Olentangy River with the First Annual Undergraduate Frisbee Golf Free Luncheon Event Spectacular! Returning graduate students welcomed back the reigning Queen of Graduate Studies, **Mary Tarantino**, and celebrated the arrival of new graduate students through a [non-alcoholic] happy hour in the New Works Lab.

## AUTUMN

Autumn quarter brought the creation of **Theatre 2 Go** and **Class Act**, two outreach and engagement acting troupes providing educational sketches to assist in the development of

**DramaTies: Drama for Education** and to support the Office of Faculty and TA Development (FTAD). Inaugural members of Theatre 2 Go included undergraduates **Meg Greene**, **Mark Hale**, **Lezlie Curtis**, **Max Koknar** and **Ashlee Mundy** along with graduates **Tanya McBride** and **Antonio Garcia**. Also during the quarter, undergraduates organized to form the Alpha Lambda Epsilon chapter of Alpha Psi Omega, a national honor society placing special emphasis on service

to the community through theatre. Undergraduate **Betsy Pandora** took a marketing internship with CAPA and began her Undergraduate Distinction Project on community participation in theatre.



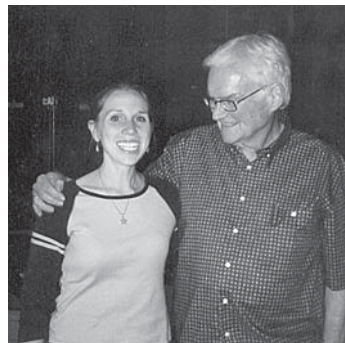
Bonnie Milligan, Christopher Lee and Beth Josephsen and the Staff of Lift Every Voice.

**Beth Josephsen**, **Christopher Lee** and **Bonnie Milligan** were three undergraduate interns selected from The Writing Company to participate in the New York Theatre Experiment’s “Lift Every Voice” project in NYC. LEV is a program that was founded by **Laura Gale Simpson**

(B.A. 2002), one of the original members of The Writing Company.

LEV works with “at-risk” high school students in NYC. Staff members teach students the basic principles of playwriting, directing and acting. The students write five minute plays that enter into a competition from which ten student works are selected. These are

directed and performed in an Off Broadway theatre by their fellow students under the supervision of LEV staff and interns.



Jennifer Stoessner poses with Jerry Juhl at Puppetfest 2005.

**Jennifer Stoessner’s** (Ph.D. Student) script *To Worship the Sun* was selected, along with 12 other scripts, to be the content for a workshop with **Jerry Juhl**, head writer of the

Muppet Show, at PuppetFest 2005. The workshop was part of the Puppeteers of America National Festival in St. Paul Minnesota. Jen-

# Spotlight on Students

nifer and other participants received feedback about their scripts from Jerry while he shared anecdotes from his days with the Muppets. Jennifer said, "It turns out that was the last feedback Jerry would give to me, and possibly to anyone else. He died on September 26, 2005. It was so sad for me and my fellow writers, from whom I heard the news. It was also a call to action for us all, to get our work out there. I know that three of us have mounted the shows we developed with Jerry since that time. I also can hear him asking questions and calling, "What about CHARACTER?" as I write even now. Thank you Jerry, for everything."



Jennifer Schlueter receives the 2006 OSU Graduate Teaching Associate Award.

**Terry Schoone-Jongen** (Ph.D. Student) received a Presidential Fellowship, which recognizes the outstanding scholarly accomplishments and potential of graduate students entering the final phase of their dissertation research or terminal degree project.

## WINTER

Winter quarter found a wealth of undergraduate creativity beginning with the Take Out Theatre Festival and climaxing with four Undergraduate Distinction Projects. **Lezlie Curtis, Beth Josephsen, Christopher Lee** and **Bonnie Milligan** each presented a 45-90 minute production that shared a piece of their life with the audience.

## SPRING

Spring quarter brought three Undergraduate Distinction Projects to the stage through solo performances by **Elizabeth Blockinger, Joëlle Joseph** and **Tyler Seiple**. At the Denman Undergraduate Research Forum, the department was represented by eight students, six of whom also performed an excerpt of their distinction project for the Denman attendees. Tyler Seiple received 2<sup>nd</sup> place in Arts and Architecture for his Undergraduate Distinction Project entitled *Oliver Hazard Perry: The Price of Victory* while Betsy Pandora received 4<sup>th</sup> place for *Every Theatre Should Be A Community Theatre: Brand-*

*ing Lessons from Columbus, Ohio*. Many of these outstanding undergraduates received up to \$4000 in research scholarships to support their work. **Beth Josephsen** (B.A. Student) was nominated for the prestigious

Marshall Scholarship by the university. Marshall Scholarships finance young Americans of high ability to study for a degree in the United Kingdom.

The 2006 M.F.A. Acting class was thrilled to participate in a show-

case in New York City with the Acting Intern Company of the Tony Award Winning Cincinnati Playhouse in the Park. The showcase was May 22, 2006 at 1:00 and 7:00 pm in the Lark Theatre Space. Three of the participating M.F.A. Actors were offered representation by Lewis Chambers of the Bethal Theatrical Agency in New York City.

On May 9, 2006, **Jennifer Schlueter** (Ph.D. Student) received the Graduate Assistant Teaching Award (GATA). This award is the university's highest recognition of the exceptional teaching provided by graduate students at Ohio State. A \$1500 award is given to the ten GATA recipients along with a plaque and a letter of recognition from the Dean of the Graduate School.

**Karen Mozingo** (Ph.D. Student) was awarded the Federal German Chancellor's Scholarship through the Alexander von Humboldt Foundation with funding for three months of research in archives in Cologne, Berlin, Munich, Leipzig and Dresden. She will be working closely with dance and theatre historian Hedwig Mueller during the Cologne part of the visit. Her dissertation focuses on the exile experiences of women dancers who fled Germany during World War II in the 1930s and emigrated to the United States.

Karen Mozingo also served the department as the FTAD Fellow for 2005/06. In this capacity, she assisted in the teaching of Theatre 801 - Research Methods so that all new theatre graduate students would be familiar with university teaching resources and practices. In the spring, Karen organized a series of seminars on considering higher education as a career. The seminar presented practical tips on job search strategies, interviewing skills and seeing the choice to pursue work in higher education as a career and not just a single job search. Peer mentoring and assistance was also offered through the FTAD program.

**Chuyoung Chon, Nick Dekker** and **Jennifer Stoessner** were selected to present research in the Edward Hayes Graduate Research Forum. The forum was held on April 22, 2006 at Haggerty Hall on the OSU campus.

**Nick Dekker, Monica White Ndounou, Christina Ritter** and **Karen Mozingo** passed the doctoral examination this academic year, and are now ABD—busy writing the prospectus for the dissertation.



Kimberly Dachel, Nick Dekker, Gina Disalvo, Chris Roche, Jennifer Stoessner and Robin Post at the 2006 ATHE Conference

On May 10, 2006, **Frank Lasik** (M.A. Student) and **Jennifer Schlueter** (Ph.D. Student) were inducted into Phi Kappa Phi, "the nation's oldest, largest and most selective all-discipline honor society."

In April 2006, several students received \$750

Student International Matching Travel grants from the OSU College of the Arts and the Department of Theatre: **Gibson Cima** (M.A. Student) for his travels to South Africa, **Christina Ritter** (Ph.D. Student) for her travels to Finland, **Karen Mozingo** (Ph.D. Student) for her travels to Canada, and **Jason Bush** (Ph.D. Student) for his travels to Peru.

**Kimberly Dachel** (M.A.) **Nick Dekker** (Ph.D. Student) **Gina Disalvo** (M.A. Student) **Chris Roche** (M.F.A.) **Jennifer**

## Denman Undergraduate Research Forum Participants



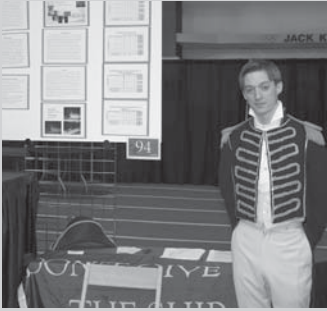
Elizabeth Pandora presents her research for *Every Theatre Should Be A Community Theatre: Branding Lessons From Columbus, Ohio*.



Beth Josephsen presents her research for *The Girls Across the Street: Educating the Community Using Theatre to Reveal the Lives of Underprivileged Children in the OSU Campus Area*.



Joëlle Joseph presents her research for *Haiti: The Encounter of Three Worlds*.



Tyler Seiple presents his research for *Oliver Hazard Perry: The Price of Victory*.



Bonnie Milligan presents her research for *A Girl's Gotta Eat: The Musical*.



Elizabeth Blockinger presents her work for *Bring the Baby Home*.



Chris Lee poses with Diana Bae while presenting his research for *The Lost City: A Performance Piece of a Young Asian American Discovering his Lost Roots*.

## END OF THE YEAR CELEBRATION

**Stoessner** (Ph.D. Student) and **Robin Post** (M.F.A. Student) led panels at the 2006 Association for Theatre in Higher Education (ATHE) Conference in Chicago. Kimberly, Nick and Chris were on a panel entitled *London - Summer 2005 - Current Productions & Practices*. Jennifer and Gina were on a panel sponsored by Religion and Theatre and entitled *New Perspectives on Gender, Race and Religious Performance: Emerging Scholars in Religion and Theatre*.

The End of Year Celebration featured many awards, including Undergraduate Scholarships, Graduate Awards for Teaching, Research and Creative Activity, the Chair's Award for Academic Excellence and awards for Undergraduate Achievement in a Production. The tradition of Back Stage Live continued this year, raising money for Camp Sunrise while showing off some new undergraduate pieces.



Tyler Seiple, Bethany Banister, Elizabeth Pandora, Beth Josephsen and Eric Colleary receiving awards at the End of Year Celebration for Undergraduate Student Excellence in recognition of earning the Bachelor of Arts in Theatre with Distinction.



Gina DiSalvo, Megan Schutt, Gibson Cima, Lise Evans, Terry Schoone-Jongen and Christina Ritter receiving awards for Outstanding Academic Achievement at the End of Year Celebration.



Nick Dekker receives a Graduate Excellence Award at the End of Year Celebration for teaching, service and creative activity.



Dan Matthews receives a Graduate Excellence Award at the End of Year Celebration for creative activity.



Megan Schutt receives a Graduate Excellence award and the End of Year Celebration for teaching and creative activity.

# Regional Cam

## Undergraduate Experience

By **Tyler Seiple**, B.A. 2006

The 2005-2006 school year has blown by with alarming speed, and, as I prepare to graduate in June, I have much for which to be thankful. In November 2005, I appeared on the stage of the Southern Theatre as Riff Raff in the Department of Theatre's production of *The Rocky Horror Show*. Not only did I perform to packed houses in a gorgeous theatre, sing like a rock star and carry an oversized laser, but I was also privileged enough to work with an amazing cast and a phenomenal director. Once again, the impressive connections at OSU had me working in places and ways I never dreamed imaginable.

In February, I performed as Khlestakov in *The Government Inspector*, a nineteenth-century comedy directed skillfully by Beth Kattelman. I perfected my comic timing, enjoyed the laughter prompted by the onstage antics of my fellow actors and also served as Vocal Coach for the production, assuring that the undergraduate cast of the show could be understood in the spacious Thurber Theatre. Though the responsibility was heavy, the fun was enormous and will not be easily equaled in the future.

In April, I restaged a show I had created with M.F.A. actor Jason Hedden in September 2005 for the Second Annual OSU/Port Clinton Performing Arts Festival. A biographical solo performance entitled *Oliver Hazard Perry: The Price of Victory*, the piece went on to win second place in Arts and Architecture in the Denman Undergraduate Research Forum and served as my vehicle for "Graduation with Distinction in Theatre." In addition, I also appeared in the May performances of *A Bright Room Called Day*, directed by Maureen Ryan. Playing Baz, I savored the opportunity to work in this unbelievably powerful and intellectually charged production. I can think of no better way to cap off my year and my career in the Department of Theatre, and I look forward to sharing my education and experience with the world as I head to graduate school at Cal State, Irvine.

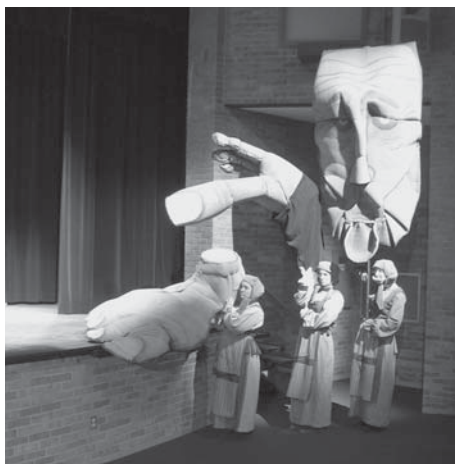
## OSU Lima

By **Joseph Brandesky**, Professor

OSU Lima generated three productions in the 2005-2006 academic year. **Joe Brandesky**, Professor of Theatre, adapted and directed a Czech fairy tale entitled *The Three Spinners* for our Theatre for Young Audiences performances during autumn 2005. Designed to tour by **Brad Steinmetz**, Assistant Professor of Theatre, the production generated enthusiastic audiences (over 3000) and a publication in *Puppetry International* about the puppet techniques used by Steinmetz. *The Three Spinners* was revived for performances at the OSU/Port Clinton Arts Festival in September 2006. In December, three current and one former Lima campus theatre students joined the Czech Theatre Study Tour to Prague. **Miranda Crowe**, **Jair Torres**

and **John Hines** (current students) joined **Cristin Gerleman** (theatre major, Columbus campus) and sixteen others on the trip. **Maria Ignatieva**, Associate Professor of Theatre, directed A. R. Gurney's *Sylvia* during winter 2006 in our black box, Stage II. Brandesky directed the spring 2006 production of George Bernard Shaw's *Arms and the Man*. Guest Designer Marketa Fantova provided sets and costumes and worked with Lima campus students during her three week residency. **Tom Postlewait**, Professor of Theatre, was invited to deliver Honors presentations about the life and career of G. B. Shaw that coincided with the opening performance. Several Lima theatre students participated in an OSU—Lima English Department Study Tour that spent a week at the Shaw Festival in Canada during June 2006.

Three students who played active roles in our theatre program were recognized with spring 2006 academic awards at OSU—Lima. **Miranda Crowe** was given the Arts Divisional Award (sponsored by the Music and Theatre faculties) while departmental awards went to **Jeanine Meyer** and **Stephanie Seaman**.



OSU Lima autumn 2005 production, *The Three Spinners*



OSU Lima spring 2006 production, *Arms and the Man*.



OSU Lima winter 2006 production, *Sylvia*.

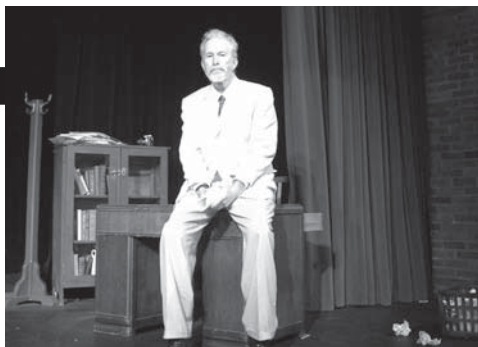
## OSU Mansfield

By **Joseph Fahey**, Assistant Professor

This was an exciting year in Mansfield. The Theatre program came under new direction as **Joseph Fahey** left Case Western Reserve University to come back to OSU and replace the retiring **Larry Evans**. The department opened its season with Neil's Simon's *The Good Doctor*. English professor and playwright **Ralph Hunt** played the Chekhov-inspired title character to a spirited reception, and the theatre program sponsored short story writing contests for college and high school students that garnered over 170 participants.

The winter offerings included three student-developed works presented over three weeks. First was **William Mastrosimone's** one-act play about school violence, *Bang Bang You're Dead!*, directed by education student **Cindy Logan**. Second was a staged reading of two short plays confronting domestic violence: **Howard Korder's** *Girls' Talk* and *Dolores* by **Edward Allan Baker**. These readings and two post show discussions were developed in conjunction with the Richland County Domestic Violence Coalition. Third was an original musical, *Melancholia*, written by Mansfield playwright **Kristina Elyse Butke** and directed by education student **Ian Ernsberger**. All three offerings were staged in an intimate, temporary thrust arrangement on the Founders Auditorium stage, advancing the goal of developing a separate small studio theatre space for student-centered and non-traditional work.

*A Funny Thing Happened on the Way to the Forum* closed out the season. **David Tovey** of the Department of Music continued his collaboration with our theatre program, the production reunited a few members of the last OSU-Mansfield cast of *Forum* from the 1990s, and the show brought together a talented group of college and high school students as well.



ABOVE: Dauphne Maloney (Domina) and Garrett Hoffman (Hysterium) in OSU Mansfield's *A Funny Thing Happened on the Way to the Forum*.

ABOVE LEFT: Ralph Hunt (The Writer) in OSU Mansfield's *The Good Doctor*.

LEFT: Aaron Shaver (Dentist) and Kathy Dabney (Sister) in OSU Mansfield's *The Good Doctor*.

## OSU Newark

By **David Williams**, Associate Professor

The Theatre Department in Newark kicked off its 2005-2006 season with a performance of Noel Coward's sparkling comedy *Fallen Angels* (presented on November 17, 18, 25 and 26). This entertaining story of a French cad's pre-marital adventures with two very proper English ladies, since married to two very proper English gentlemen, showcased Coward's scintillating dialogue, some thorough dialect work by the performers and a full-course meal in the second act generously provided by the staff at Oxley's. It played to very full houses, and on some nights, the laughter was infectious and uproarious.

For a complete change of pace, the second production of the year was Samuel Beckett's *Endgame* (presented on March 2, 3, 4, 9, 10 and 11). Arguably the high-water mark of 20th-century dramaturgy, this challenging script gave Licking County residents a theatrical experience available in no other local venue. All credit is due to the audience, who rewarded the performers with rapt attention and sometimes surprising bursts of laughter.

The season closed with Tom Stoppard's *The Real Inspector Hound* (presented on May 25-27, and June 1-3). Guest director **Edie L. Norlin** had the wonderful idea of asking a different OSU-Newark faculty member to play the corpse every night; this brought new people into the theatre and added greatly to the fun of the production. Student performers and local community theatre actors provided a solid blend of enthusiasm and experience.



Clov (Austin Deke) goes after that pesky flea in *Endgame* at OSU Newark.



Joy Reilly (right) congratulates Xela Batchelder (left) on receiving her Ph.D. in Theatre.



Mary Tarantino (left) advises Jason Banks (right) on one of his design projects.



Joy Reilly (right) counsels Joëlle Joseph (left) on her Distinction in Theatre Honors Project, Haiti: The Encounter of Three Worlds.



Mandy Fox (left) coaches Jack Clancy (Right) in a voice class.



Jan Woods (left) examines the costume construction work of Sarah Woodyard (right).

# Faculty and



Eric Mayer calls cues for *The Rocky Horror Show* at the Southern Theatre.



Beth Kattelman (center) directs a student scene.



Valerie Lucas leads a discussion with one of her classes.



Chris Zinkon makes a presentation to a design class.



Kristine Kearney talks about the profession of costume design and construction.

## Lesley Ferris

Professor

History, Literature and Criticism



After serving nearly 8 years of chairing OSU Theatre, Lesley Ferris stepped down on July 1, 2005. Prior to this she received a Colleges of Arts and Sciences

Research Grant for Exemplary Service for her work as a chair. She served as resident director of the London Theatre Program for five weeks in the summer. Following this she began her first ever sabbatical. She spent the first two months researching carnival in London. Along with Brian Stone (Design) and Dorothy Noyes (English) she was the recipient of a Faculty Innovation Grant entitled "Afro-Caribbean Carnival Arts: An Interactive Multimedia Exhibit." In November 2005, Lesley joined Lizbeth Goodman's SmArt Lab (London) in Tunis at the World Summit of Information Society. In late January she was a guest artist in residence with the Tisch School of the Arts Department of Drama where she directed Adrienne Kennedy's *A Movie Star Has to Star in Black and White*. In May she returned to London to continue research on the London Notting Hill Carnival project.

Her recent publications include: "On the Streets of Notting Hill: Carnival as/is Theatre," *Theatre History Studies* (2005); "Fragments of a Life: Performing History in Newington Green," *Theatre Forum: International Theatre Journal*, (No. 28, winter/spring 2006); and "Rejuvenating a Classic" (essay on the Old Vic Theatre, London), *Stage Directions*, (February 2006). In February 2006 the Central Ohio Theatre Critics Circle presented Lesley with a citation for "strong leadership and commitment to artistic collaborations, international exchanges, guest artists and the nurturing of new and adventurous new works."



# Staff Updates

## Mandy Fox

Assistant Professor  
Acting and Directing



This has been a busy year for Mandy Fox as she finishes her first year as the Director of Undergraduate Studies, which included an academic assessment of the undergraduate B.A. program. (Thanks to those who filled out alumni surveys! In response to your suggestions, we have created two exciting initiatives geared toward an increase in undergraduate production opportunities and internship placement.) Mandy serves on numerous Distinction Project Committees and as advisor to several student organizations.

During summer 2005, Mandy presented at the ATHE conference in San Francisco on "Creating New Work from Interview," a topic central to the M.F.A. voice curriculum. In autumn 2005, Mandy directed *The Rocky Horror Show*, a hugely successful first time collaboration between CAPA and Ohio State which was performed at the historic Southern Theatre. This winter, Mandy accompanied Jeanine Thompson to the Chicago U/RTA auditions in search of ten new actors for the M.F.A. class of 2009. In the spring, Mandy served as Vocal Coach on CATCO's production of *Cat on a Hot Tin Roof*, advised the graduating M.F.A. Actors in preparation for their New York showcase and served as Vocal Coach on OSU's production of *A Bright Room Called Day*.

## Anthony D. Hill

Associate Professor  
History, Literature and Criticism



Anthony Hill recently developed and implemented an upper division undergraduate seminar on the life and works of August Wilson. He took a Special Research Assignment (SRA) leave during winter quarter 2005 to do research on his book, *An Historical Dictionary on African*

*American Theatre History*. Other scholarly activities include a review on *Understanding Adrienne Kennedy* for The University of South Carolina Press; a submission of three historical entries, "The African Company," "Charles Gilpin," and "Bert Williams," in Dr. Quintard Taylor's *Pursuing the Past in the Twenty-first Century*, and the release of the second publication of his book *Pages from the Harlem Renaissance: A Chronicle of Performance*. He was featured in *Who's Who in Black Columbus*, the 2006 edition and he participated in The National Black Theatre Festival and The Black Theatre Network Conference (BTN) in Winston-Salem, North Carolina.

## Valerie Kaneko Lucas

Assistant Professor  
Director of Outreach and Engagement



For the M.F.A. Community Outreach and Engagement Project, Valerie led the creation of *Hidden Voices*. Through partnership with Turning Point Shelter and Counseling Services of Central Ohio and local anti-violence organizations, graduate student interns led expressive arts workshops with the residents. Their story was drawn from the testimonies of women, men and children who have survived domestic violence. Valerie created Theatre 2 Go, a troupe specializing in interactive, issue-based theatre. Their intrepid team brought its light-hearted approach to topics such as cultural diversity, eating disorders, team-working and agritourism. With an OSU C.A.R.E.S. grant, Valerie created DramaTies, a program to teach drama techniques for youth leaders. DramaTies has opened new artistic partnerships with local community agencies and looks to expand in 2007. She is organizing a conference in London on British Asian performance with the Society for Theatre Research. Her research on the post-Empire diaspora has been shared through conference presentations on Black British and British Asian theatres at ASTR, Howard University, the European History and Social History Conference as well as publication of three articles.

Along with her colleagues in Asian American Studies, Valerie was honored with the Organization of Chinese Americans Award for *Voices from the Camps*, a new play documenting the Japanese American internment during World War II.

## Eric H. Mayer

Undergraduate Studies Coordinator



Eric had a busy academic year beginning with his stage management responsibilities for OSU Theatre's production of *The Rocky Horror Show*.

After a smashing success at the Southern Theatre, he did a time warp from the 70's all the way back to the 1890's for the Columbus Youth Ballet's *The Nutcracker*. After a short break for the holidays, Eric returned to the Capitol Theatre for his second production with the Phoenix Theatre for Children, joining Snoopy and the gang in *You're A Good Man, Charlie Brown!* He ended the year helping out fellow alum Stacey Siak as a substitute sound board operator for CATCO's *Greater Tuna*. Eric also received a staff grant from the College of the Arts to support his fondness of electronics and desire to learn.

## Thomas Postlewait

Professor  
History, Literature and Criticism



Thomas Postlewait was pleased to receive a University Distinguished Scholar award in 2006 from OSU. This award follows upon his receiving a senior research scholar award in 2004 from the National Endowment for the Humanities. He continues to serve as the editor of the award-winning book series, "Studies in Theatre History and Culture," published by the University of Iowa Press. Over thirty-five books have been published in the series. He has finished two book manuscripts, *Cambridge Introduction to Theatre Historiography*

and *Historical Inquiry: Past and Present*. Both are scheduled to be published by Cambridge University Press. His essay, "The London Stage, 1895-1918," was recently published in volume three of *The Cambridge History of British Theatre*. Also, his introductory essay in *The Cambridge History of American Theatre*, vol. two, "The Hieroglyphic Stage: American Theatre and Society, Post-Civil War to 1945," was republished by the press in a new paperback edition (2006).

He is currently advising nine graduate students (four M.A., five Ph.D.) in theatre, and he is also on the dissertation committees of doctoral students in history, English and musicology. During the last year he has delivered invited talks at the University of Washington, Northwestern University, University of Illinois and the Huntington Library in California. His presentation at the Huntington, "George Edwards and the Transformation of the London Stage, 1886-1915," will be published in the fifth and final volume of the book series called "Redefining British Theatre History" (Palgrave Mcmillan), general editor Peter Holland.

## Joy Reilly

Associate Professor  
History, Literature and Criticism



In the past year Joy Reilly added new developments to her twenty-year interest in Theatre and Aging, in both teaching, and in writing/performing. With colleague Alan Woods, she was awarded a three-year \$15,000 grant by the Office of Continuing Education to begin developing graduate seminars in senior theatre, the first of their kind in the country. Two two-week intensive seminars were offered at the beginning of August 2005. Reilly is artistic director of *Howling at the Moon*, a company of eight women artists over sixty, who are documenting their own experience of "the exquisite art of growing old" in LiveArt performances in which each writer reads her work. Their performances this year included a collaboration with the 60 voice Columbus Women's Chorus, the Port Clinton Festival, workshops with WOSU TV and the Central

Ohio Area Agency on Aging. Her book, *Age on Stage: Lifewriting Your Monologue*, provides guidelines for those working with the elderly. Reilly also made presentations at ATHE 2005, AGHE 2005 (Assoc. for Gerontology in Higher Education) and taught Lifewriting and Comedy/Improv workshops at KC/ACTR in Illinois.

## Mary Tarantino

Associate Professor  
Design and Technology



In autumn 2005, Mary participated in TH 671: Czech Modern Theatre with colleague Joe Brandesky, followed by a ten day study tour to the Czech Republic. Attending *The Magic Flute*, seated in the presidential box at the Estates Theatre was one of many highlights. In November, Mary designed lighting for *Greenhouse Gala*, a fundraiser presented by OSU's College of Biological Sciences. She lit walkways and research rooms and a lovely rooftop conservatory for the event. Mary contributed an article for the Theatre Library Association's annual publication, *Performing Arts Resources*, entitled "Beyond the Produced Design: Teaching Lighting Design Through Archival Research." She focused on the Theatre Research Institute's splendid Thomas Skelton Archive, explored in a recent research seminar. In February, Mary designed lighting for *The Weir*, presented by the Contemporary American Theatre Company. And in spring quarter, Mary taught a web-based seminar class exploring Aristophanes' *Birds* for theatre students planning to participate in Scenofest activities associated with the Prague Quadrennial, in June 2007. The class featured a special master class "Birds Flight

Studio" session hosted by Czech director and puppet-master Petr Matásek. See <http://theatre.osu.edu/prague> for more information.

## Jeanine Thompson

Associate Professor  
Acting and Directing



This year was the third and final year for our acting students in our new M.F.A. program that focuses on the Creation of New Works. Therefore, there was a great deal to be accomplished by all of us by our June deadline. And, since we take in one M.F.A. acting class every three years, this was also our year to recruit a new M.F.A. acting class. Again we recruited some of our country's brightest and most talented actors and creators. In January and March Jeanine was invited by the Ohio Arts Council and the Chilean Cultural Ministry of Arts to return to Concepcion, Chile to conduct her second residency with dancers, actors and faculty from the area. Viewpoints Training and Composition were the highlights for the students and faculty participating in the residency. One of the highlights for Jeanine in the residency was teaching her signature solo *Images of Woman* to three women of three different generations. This work expresses the youth, maturity, old age and passing of a woman. Having it be performed by three women: one a teenager, one late twenties, one early sixties - was breathtaking to watch due to the nuances that each of the women expressed as they passed through the different stages of life. This work premiered in March at the residency performance in Concepcion, Chile and will continue to be performed throughout Chile.

*"I think OSU has an extremely efficient department with a wide range of talents in its teaching. It's innovative especially in a way that it intercedes people from abroad and integrates them into the system. The teaching staff really cares about students, which I think is really important. I think in a sense that surprised me because it's such a big university, you would think it would be impersonal, but it's everything but that."*

—Peter Cutts solo performer and artistic director

# Alumni and Friends

## Alan Woods

Associate Professor  
History, Literature and Criticism  
Director, Lawrence and Lee Theatre  
Research Institute



Alan Woods developed a new 'capstone' seminar for graduate seniors on censorship, offered for the first time in spring 2006

and taught his new honors Introduction to Theatre Through Primary Materials for the second time; students reconstructed how new plays get produced, including interviewing the playwrights. Alan conducted an audio description training workshop in the summer of 2005, and did a group improvisation workshop at the Regional KC/ACTF Festival in January. He collaborated with Joy Reilly in offering the nation's first graduate courses in Theatre and Aging—which are also part of the Graduate Certificate in Gerontology through Ohio State's School of Allied Medicine. In August, he hosted the second annual retreat for members of the International Center for Women Playwrights. And Alan returned to the boards in March, appearing as a Freudian psychoanalyst for Women at Play's final production, Katherine Burkman's adaptation of *The Hungry Hearts*, a novel by Francine Prose. Off campus, Alan remains active in local politics, is testing bread recipes for a new book by Peter Reinhart, a nationally-recognized baker, and is a 'faculty buddy' for an Honors residence.

## 1950's

### Jackson, Esther Merle (Ph.D. 1958)

Professor Esther Merle Jackson died Tuesday, August 1, 2006. She earned the doctorate in theatre from The Ohio State University in 1958, the first African-American Ph.D. from our department.

Esther was a distinguished Professor of Dramatic Literature and Criticism in the Department of Theatre and Drama at the University of Wisconsin Madison for 18 years until her retirement in 1988. Her work on Williams and O'Neill especially, and her championing of American drama in the academy and culture at large were instrumental in raising the status of our field.

## 1960's

### Stein, Meridee (B.A. 1969)

Meridee Co-produced and Directed the Off-Broadway production of *Captain Louie*, which is embarking on a national tour October 2006-2007. She has worked throughout her career to create new musical works for family audiences. She was the founder and Artistic Director of the First All Children's Theatre (First ACT) which she ran for 17 years, and for which she received a special award from the Kennedy Center for excellence in the production of musical Theatre for children and youth.

### Wayre, Richard (Ph.D. 1966)

Richard's former student, Mark Cartier, recently dedicated a Bridgewater State College Children's Theatre production of *Alice in Wonderland* to him. In the dedication, Mark

said, "Once a year, thousands of schoolchildren arrive at Bridgewater State College in Massachusetts to experience the magic of the BSC Children's Theatre's annual production. The founder of that Children's Theatre, Dr. Richard Warye, summers at nearby Livermore and has been a patron of The Theater at Monmouth for many years. I would like to dedicate this production of *Alice in Wonderland* to Dr. Warye for introducing countless children to the wonders of live theater, where anything is possible....May the magic that Dr. Warye taught me inspire each and every one of you."

## 1970's

### Mohler, Frank (Ph.D. 1976)

The USITT Member International Travel Award was recently created to assist members with research or creative projects in other countries. In recognition of the scarcity of support for these activities, the USITT International Committee recommended this award alternate years with the Student International Travel Award. The first award recipient is Frank Mohler, who will travel to Cesky Krumlov in the Czech Republic to document the theatrical machinery in the Baroque theatre in the castle.

## 1980's:

### Dunham, Richard (M.F.A. 1987)

Richard is rotating out of the USITT Commission leadership... something that he has been involved with in one capacity or another since the late 1980s. His last stint in the Lighting Commission has been as Senior Co-Commissioner for the last five or six years. By far his most significant contribution will be the release of the long-awaited RP-2 Lighting Graphics Recommended Practice in July 2006. This project will not be able to please everyone on all things but goes a long way in providing some needed standardization to the process of drafting light plots and sections.

### Finnegan, John (M.F.A. 1988)

John is Associate Professor of CGT at Purdue University. He recently served as the conference chair for SIGGRAPH 2006 Educator's Program in Boston. "The SIGGRAPH 2006



On behalf of the Department of Theatre, Mark Shanda is recognized at halftime of the Michigan State game for the Distinguished Diversity Excellence Award.

# Alumni and Friends (continued)

Educators Program is the place where people from all levels and disciplines, from within traditional academia and without, can share their research, methods and opinions about the teaching and integration of computer graphics and interactive techniques into all areas of learning. The program provides several opportunities for you to present your work."

**Jones, Chris** (Ph.D. 1989)

Chris was recently named the principle theatre critic for the *Chicago Tribune*.

**Molina, Gary L.** (BFA 1989)

Gary Molina is starting his third year as managing director of Ohio Valley Summer Theater in Athens, OH. OVST is a collaboration between Ohio University and the greater Athens community. Gary also is working as a director with the Appalachian Regional Theatre Company developing *That Sheep May Safely Graze*, a new script by Appalachian playwright Bob Smiddie. *Sheep* will be performed this autumn as part of the Humble Pie New Play Festival at ARTS/West, Athens Community Gateway to the Arts.

**Murray, Helen** (M.F.A. 1987)

Robert and Helen are still very happily married (approaching their 19th wedding anniversary in April), they have one son (12 years old-William), and live in a southern suburb of Seattle. They watch the OSU/Michigan game religiously every year, and root the Buckeyes on as only alums can.

**Schrum, Stephen** (M.A. 1983)

Stephen performed *Immaculate Misconceptions* June 16 and 17, 2006 in the Ferguson Theater on the University of Pittsburgh at Greensburg Campus. *Immaculate Misconceptions* is a monologue about the simplistic explanations, half-truths, canonical misinterpretations and outright disinformation received from the mouths of teachers by Catholic school students.

**Sobota, Madeleine** (M.F.A. 1988)

Madeleine won the 2005 United States Institute for Theatre Technology's (USITT) silver medal for her lighting designs of *Hamletmaschine*, *Women of Troy*, *St. Joan of the Stockyards*. She was named one of 14 outstanding

Designers at the 2006 United States Institute for Theatre Technology (USITT) Design Exhibition for her set design of *A Mouthful of Birds* for Butler University Theatre. Madeleine was recently awarded a Lily Foundation 2005-2006 Creative Renewal Fellowship to research design for non-traditional theatre spaces in London.

## 1990s:

**Gearen, Mary Beidler** (M.A. 1990)

Mary was honored to be asked to direct *Filipino Hearts* for MU Performing Arts in Minneapolis at the Southern Theatre in fall 2006. It is a new musical play in folktale framework.

**Charles, Cezanne** (B.A. 1997)

Cezanne is Executive Director of New Media Scotland. Cezanne's background in arts management includes specializing in art and technology funding, policy and development. Originally from the US, she moved to Britain in 2003 to co-curate and manage the exhibition Intersculpt:uk 03 for Manchester based artist-led organization Fast-uk. She has served as a consultant to arts organizations and artists in the areas of technology planning, professional and organizational development, and strategic planning in both the US and Britain, including Lexington Arts & Cultural Council. From 2000 - 2003 she worked at Culture Works, Greater Dayton's Arts Council and United Arts Fund where she developed and managed funds to small and mid-sized arts organizations and individual artists.

**Cleveland, Annie** (M.F.A. 1990)

Annie was accepted as a faculty member on Semester at Sea for the fall 2005 semester. Semester at Sea is a university aboard ship that sails around the world. She visited nine countries including Venezuela, Brazil, South Africa, Kenya, India, Myanmar, Vietnam, Hong Kong and Japan. She taught three classes, World Theatre, Acting, and Clothing and Culture, went on a safari in Kenya, visited the Taj Majal, and attended a Bunraku puppet show in Japan. The highlight of the trip was that Desmond Tutu joined the ship in Brazil and sailed with them to South Africa.

**Fryman, Brad** (M.F.A. 1996)

Brad is the Artistic Director of Oberon Theatre Ensemble, which recently celebrated its tenth anniversary. In January 2006, he was interviewed about his work as Artistic Director by Maggie Cino for an article in *United Stages*. Here's a sample of the interview:

**MC:** So, after ten years, you can confidently say that you made it! What piece of hard-won wisdom would you give to someone wanting to start their own theater company in New York?

**BF:** We have done a great deal with very little financial support. However, if there is any way to get the financial backing in line, do it. I could never over estimate the importance of surrounding yourself with brilliant people that challenge you. Be very clear with your goals and ambitions. Every group needs to know where it is going and what it will take to get there. Be sure to empower your members to fulfill their roles. As a great philosopher once said, 'Have enough belief in those that surround you that they eventually foster that belief in themselves and go on to greatness.'"

**Kang, Tae-Kyeong** (Ph.D. 1997)

Tae-Kyeong spent the last academic year here in Columbus on leave from his teaching position in Seoul, Korea. He has also been quite successful in his career—teacher, administrator and scholar. He has an impressive list of publications in both Korean and English.

**Koumidou, Anastasia** (M.F.A. 1997)

Anastasia finished a 4 month run in the National Theatre of North Greece, where she has a contract until summer 2006 as an actress. In the meantime, she has her own theatre company, named *Persona Non Grata*, together with 11 artists from various disciplines and is preparing their new show; a one-act by French writer G. Feydeau. She also teaches history of Theatre in the Continuing Education Program of the Greek Ministry of Culture and Voice and Speech in the Continuing Education Program of the American College of Thessaloniki. Anastasia is a single mom of a 7 year-old wild tyke, Aris Hathaway.

**Kundert-Gibbs, Kristin** (M.F.A. 1990)

Kristin is excited to announce that she has taken a position on the Graduate Acting Faculty at The University of Georgia. She is even more excited to announce that with the addition of herself and another movement specialist, the M.F.A. at Georgia has been completely redesigned and has some new components that are unique to UGA including green screen and motion capture training.

**Dennis Hassan** (M.F.A. 1993)

Dennis was one of fourteen designers named as Outstanding Designers at the 2006 United States Institute for Theatre Technology (USITT) Design Exhibition awarded for his co-projection design with Alan Hashimoto of *Jacques Brel is Alive and Well and Living in Paris* for Utah State Theatre. He is the Projection Art Director and Associate Professor of Scenic Design at Utah State University and the USITT Scene Design Vice Commissioner for Computers.

**Janwehr, Joey** (M.F.A. 1997)

Joey took the position of Artistic Director for the J\*Company in February of 2006 in La Jolla, California. He was the Director for the San Diego Performing Arts League for the past three years. During 2005 Joey was busy in the arts being involved in (AFTA) Americans for the Arts, (APASO) Association of Performing Arts and (NAMPA) the National Arts Marketing Program. He has been director and choreographer for the San Diego Junior Theatre and has received excellence awards for acting in the Actors Alliance of San Diego Festival.

**Lawson, Emily** (B.A. 1998)

Emily is the current Assistant Company Manager of *The Wedding Singer* on Broadway in New York. She was the Company Manager of *Hurlyburly* on Off-Broadway in summer 2005.

**Lindemann (Morton), Presley** (M.F.A. 1999)

Presley designed the costumes for the Contemporary American Theatre Company's production of *Greater Tuna*. Michael Grossberg of *The Columbus Dispatch* said her "comic costumes help bring the characters to life, from Didi Snively's recycled-ammo-dump

duds and the pastor's shiny white leisure suit to Carp's pretty-in-pink garden-party outfit."

**Martin, Kenneth** (M.F.A. 1991)

Kenneth will be leaving the great state of Ohio for warmer climates. He's accepted a faculty position with Coastal Carolina University (Conway, SC - just outside of Myrtle Beach).

**Milligan, Michael** (B.A. 1995)

Michael played Costard in *Love's Labours Lost* at the Shakespeare Theatre in Washington, directed by Michael Kahn, in a production that will be part of the total canon at the RSC. From review in *Variety*, 6/15/06, p. 27, as part of praise of the production, which Kahn sets in late 1960s in India: "Indeed, lunacy is the principal guidepost, as virtually every role is played for maximum effect. The tone is set by Michael Milligan's Costard the clown, interpreted as the quintessential zoned-out '60-s hippie...." Michael also played the title role in the off-Broadway production of *Thom Pain*. He attended Julliard after receiving his B.A. at OSU and stepped into the title role of Thom Pain in 2005. He went on to portray Sganarelle in Moliere's *Don Juan* at the Shakespeare Theatre in Washington.

**Peters, Glenn** (M.F.A. 1999)

**January-April 2005:** National Tour with The Acting Company (third consecutive season with the company).

**May 2005:** The Acting Company played a 2 week engagement at The Acorn Theatre at Theatre Row on 42nd Street. Glenn's performance in Jeffrey Hatcher's adaptation of *The Turn of the Screw* was hailed by The New York Times as "wonderfully sly".

**September 2005:** Glenn appeared in *The Shaggs: Philosophy of the World* at the 2nd Annual NY Musical Theatre Festival.

**October 2005:** Glenn played Christopher Marlowe in the East Coast Premiere of *Murdering Marlowe*, by Christopher Marowitz.

**December 2005:** Glenn directed Thornton Wilder's *The Long Christmas Dinner* for fellow OSU Alumni Laura Gale's New York Theatre Experiment. The piece featured performances by OSU graduates Laura Gale, Allyson Morgan and Casey Burns, and played in repertory with a new version of *A Christmas Carol*, directed by alum Joey Schultz. The double-bill



Glen Peters in *I Am My Own Wife* at the Zachary Scott Theatre Center in Austin Texas.



Members of Jeanine Thompson's Viewpoints class warming-up. Viewpoints is a movement technique founded by Anne Bogart of SITI Company that focuses on the exploration and use of architecture and spatial relationships.



Viewpoints students manifest their awareness of each other and their space.



Emily Beisner working on a platform for *A Bright Room Called Day*.

# Alumni and Friends (continued)

played at Manhattan's Blue Heron Arts Center **December 8-18, February 2006:** Glenn performed in a sold-out, extended run of *In On It*, written and directed by Daniel MacIvor, at The Encore Theatre Company in San Francisco. Professor Jeanine Thompson was able to catch a performance along with former professor Phil Thompson, while they were in the Bay Area for URTA auditions. From late April to July, Glenn was in residence at The Zachary Scott Theatre in Austin, TX performing in the Texas premiere of Doug Wright's Pulitzer Prize-Winning *I Am My Own Wife*.

## **Pisano, Linda** (M.F.A. 1996)

Linda was one of fourteen designers named Outstanding Designers at the 2006 United States Institute for Theatre Technology (USITT) Design Exhibition for her costume design of *Doctor Faustus* for the Utah Shakespearean Festival. On the faculty at Indiana University and director of the study abroad program in London, Linda is a member of United Scenic Artists 829.

## **Putnam, Jonathan** (M.F.A. 1990)

Jon had another busy season at the Contemporary American Theatre Company (CATCO) where he is the Associate Artistic Director. He portrayed Richard Nixon in Herb Brown's new work, *You're My Boy*. He also appeared in CATCO's production of *Greater Tuna*.

## **Turney, Kim** (M.F.A. 1992):

Kim was assistant choreographer for a workshop of *Gladiator: the Musical* in May of 2006 in Los Angeles. The producers are raising funds to open it on Broadway. Kim is a member of the Academy of Theatrical Combat and is one of three sword masters.

## **Rastompour, Feresteh Hough** (M.F.A. 1995)

Feresteh designed lights and sound for *The Hungry Hearts*, Kathy Burkman's last production with Women at Play.

## **Rogo-Vega, Paula** (B.A. 1991)

Paula and her husband, Al, are celebrating the birth of their son, Lucas Peter Salm-Rojo. Lucas was born on February 5, 2006, weighing 7 lbs, 2 oz. In their spare time they lifted the house 30 inches to create a usable basement and re-landscaped the yard.

## **Swanson, Michael** (Ph.D. 1991)

Michael is now the Theatre Arts Director / Instructor for Fresno City College in Fresno, CA. He is also an Adjunct Professor at Western Illinois University, Macomb, IL, past Chair of the Region III Kennedy Center American College Theater Festival (KC/ACTF) and the National President of Theta Alpha Phi.

## **Washer, Micheal Jon** (B.A. 1994)

Miri Simone Washer, daughter of Mike and Michele (Morin, B.A. 1998) Washer was born at 4:41 am July 23. She was 7 lbs. , 9 oz. and 20.25 inches long. Everyone is healthy and happy.

**Luther D. Wells** (M.F.A. 1993) is the chair of the Department of Visual Arts, Humanities and Theatre at Florida A&M University.

## **2000s:**

## **Atkinson, David** (B.A. 2004)

David designed lights and sound for *All My Sons* at Gallery Players in Columbus.

## **Borgeson, Sara** (M.F.A. 2003)

Sara is working at the Repertory at the Colorado Springs Fine Arts Center, acting and teaching classes. She just finished playing Lina Lamont in *Singin' in the Rain* and teaching the Youth Rep doing *City of Angels*. She's also doing voice-overs in Colorado Springs.

## **Bowerman, Damian** (M.F.A. 2002)

Damian returned to The OSU Department of Theatre in July 2005 from The Columbus Association of Performing Arts (CAPA) where he coordinated the annual fund campaign, special events and individual memberships. As the Graduate Studies and Publicity Coordinator he serves as a liaison to the Graduate School for theatre graduate students from admission through graduation. He is also responsible for designing posters and programs for several productions, editing *Encore*, and coordinating department publicity. Damian is a member of the Actor's Equity Association and most recently played Theo in CATCO's production of *The Underpants*. Damian and Marlene announced the birth of their second son, Aiden Nathaniel Bowerman, born on July 24, 2006, weighing 7 lbs. 7 oz. and measuring 19.5 inches.

## **Burns, Casey** (B.A. 2003)

Casey recently performed in the New York Theatre Experiment's production of *The Long Christmas Dinner* and *A New York Christmas Carol*.

## **Butler, Laura** (B.A. 2003)

Laura performed in *The Glass Menagerie* as Laura in the Dorset Theatre Festival in Vermont August through September 2006. She also appeared in City Actors Theater Company's evening of three one-act plays called *SPLIT ENDS - Then & Now* at The Blue Heron Arts Center in New York City. She was also in a show on Ellis Island called *Remember the Dream*.

## **Bowen, Kristen** (Kidd) (B.A. 2001)

Kristen and Mike Bowen, Technical Director at the Actors Theatre of Louisville, announced the birth of their new baby boy, Christopher Jacob Bowen, born on January 7, 2006 at 9 lbs 11 oz, 22 inches.

## **Colleary, Eric** (B.A. 2005)

Eric will be pursuing his M.A./Ph.D. in Theatre at The University of Minnesota. His paper proposal to the 12th annual "Pedagogy and Theatre of the Oppressed" Conference at the University of North Carolina at Chapel Hill was accepted. The conference focused on research and workshops relating to Paulo Friere's Pedagogy of the Oppressed and Augusto Boal's Theatre of the Oppressed. His paper is on Cardboard Citizens, the United Kingdom's only homeless people's professional theatre company who use Boal's Forum Theatre to raise awareness to issues of homelessness and displacement. This was part of his undergraduate research project that he conducted in London this past summer.

## **Cutler, Elizabeth** (M.F.A. 2005)

In August 2005, Betsy moved to Cincinnati and started work with 3dx, a professional scenic studio, as a Scenic Fabricator. When their busy summer season wound down, she was offered an assistant position making Murphy beds and assisting with the install for Miami University's opera *Così Fan Tutti*. After it opened she was offered a job assisting the artistic director for the installation of Winterfest at Paramount's Kings Island. Paramount hired a production company from Orlando,

Production Resource Group, to design, build and install all the outside Winterfest decorations. Most of the décor was preplanned but she got to work on decorating the insides of two themed restaurants. Most recently, she assisted with building and painting *Frosty: A Magical Adventure* with David Centers for the Cincinnati Children's Theatre. She'll be assisting David with the design and build of *The Wizard of Oz* in January. Betsy designed *Godspell*, *Ragtime* and *Cabaret* in summer 2006 for Jersey Productions at the Carnegie in Covington.

**DeVito, Carie** (M.F.A. 2002)

Carie and her husband Chris announced the arrival of Alex Christopher Ivanovski, born June 21st at 8:03 pm, 7.9lbs, 20 inches!

**Evans, Dean** (B.A. 2003)

Dean's most recent appearance with The Neo-Futurists was in *Daredevils*. The Chicago Tribune said, "Friends, this is raucous, good-time theater, a small-scale killer spectacle that is likely to be the most entertaining 90 minutes of juvenilia and self-reflection you'll see all year....Dean Evans, with his wiry intensity and blond Pee-Wee Herman looks, is a stand-out." Dean also returned to OSU in fall 2005 to perform in *Too Much Light Makes the Baby Go Blind* with the Neo-Futurists.

**Gonzales, Kathleen** (M.F.A. 2002)

Kathleen appeared in *James and the Giant Peach* at Imagination Stage and accepted a part time adjunct teaching position at Montgomery College for the fall 2005 term.

**Kirkman, John** (B.A. 2004)

John is the Master Electrician for the Wagner College Theatre Department. During the past year he was a professional electrician intern at Juillard School. John also has worked as an electrician at Opera Columbus, Rocket Venues and Red Herring Theatre.

**Naomi Hatsfelt** (M.F.A. 2002)

Naomi is teaching all the performance classes at Wilkes University. She will also direct at least one show a year. This year she's directing *Batboy: the Musical*.

**James, Creighton** (B.A. 2000)

Creighton is a Teaching Artist for Lift Every

Voice and Associate Artistic Director for New York Theatre Experiment. He is an M.F.A. candidate in the Graduate Acting Program at the Tisch School of the Arts at New York University. Creighton co-wrote *A New York Christmas Carol*, which was recently produced by NYTE.

**Jurlina, Jocelyn** (M.F.A. 2004)

Jocelyn designed costumes for *All My Sons* at Gallery Players in Columbus.

**Kotwal, Kaizaad** (Ph.D. 2000)

Kaizaad designed costumes for *The Hungry Hearts*, Kathy Burkman's last production with Women at Play. Kaizaad is the theatre faculty on the OSU Marion Campus

**Farrelly, Ann** (Ph.D. 2004)

Ann accepted a job offer from the University of Wisconsin-Platteville.

**Gale (Simpson), Laura** (B.A. 2002)

As Executive Artistic Director, Laura oversees New York Theatre Experiment and NYTE's theatre education program, Lift Every Voice. She is an actor, director, writer, producer and arts educator. In New York, her work has included positions with Manhattan Theatre Club, the Mint Theater and the 92nd Street Y, along with a wide variety of freelance writing, teaching and performance. Laura recently performed in *The Long Christmas Dinner* and *A New York Christmas Carol* at NYTE.

**Jones, Kristopher** (M.F.A. 2002)

Kris has a full time job at Six Flags working as the Production Manager and Resident Lighting Designer. Kris says, "It's quite a great job, but at times it can be quite daunting, especially during the Halloween Season, but quite a rewarding one. Especially during the character shows when you see the kids dancing in the aisles!"

**Lee, Esther Kim** (Ph.D. 2000)

Esther is teaching at the University of Illinois. She has been quite active as a scholar, delivering papers at conferences. Two years ago she was elected by the membership of the American Society for Theatre Research to the Executive Committee, a real honor for a young scholar. And after doing extensive new research that substantially expanded and



Anthony Trujillo and Blair Wing prepare their Manifesto, a class project that demonstrates their goals and initiatives as theatre artists.



Ryan Reynolds, Amira Soliman, Megan Dunlap and Adam Rex prepare for an interview scene for their Video Production class in the spring of 2006.



Joy Reilly coaches some Take Out Theatre participants. Take Out Theatre is an annual improvisation night.

*"She (Dr. Joy Reilly) had an outgoing personality and ability to go to large lengths to communicate with the students," he (Matt Gillaugh) said. "I took the class (Theatre 100) in the winter 2004 and still remember how fun the creative project was, and how cool she was."*

The Lantern  
25 January 2006  
Michael Evans

# Alumni and Friends (continued)

changed her dissertation, she wrote a study of Asian American theatre—the most comprehensive study, which Cambridge University Press has accepted for publication. It will be out this year.

**Meier, Jeremy** (M.F.A. 2002):

Jeremy is currently teaching Theatre at Central Michigan University, his undergraduate alma mater. He also spent several seasons instructing students in Acting and Voice for the Actor at Blue Lake Fine Arts Camp. Jeremy recently portrayed John Dillinger for the 2005 Ohio Chautauqua.

**Moore, Robert** (M.F.A. 2000)

Robert is still working with Blue Man Group in Chicago. He and Blue Man Group are coming to the Nationwide Arena on November 16th to perform their “How to be a Megastar 2.0 tour.” His role in the tour will be focused on props and Blue Man technology. He designed the set for 6 productions last year and plans to do 3 this year, unless he works on more legs of the tour. Robert has been given more management responsibilities with Blue Man Group as well as the potential to expand his role with the greater company as a whole.

**Morgan, Allyson** (B.A. 2004)

Allyson is the Associate Artistic Director New York Theatre Experiment. She appeared in *The Audition*, at the Wings Theater. Allyson has traveled to Los Angeles, where she worked for Paramount Pictures and was a stand-in for Alexa Vega (*Spykids*) on *State's Evidence*, a new movie from the writer of *Barbershop*.

**Morgan, Jessica** (M.F.A. 2000)

Jessica joined West Virginia University in 2001 as an assistant professor of movement and is presently working toward her certification in stage combat and Suzuki.

**Pandora, Betsy** (B.A. 2006)

Betsy is the Education Assistant for the Education Department at the Wexner Center for the Arts.

**Russo, Carol** (M.F.A. 2000)

Carol played the Snake Lady in *Stone Cold Dead Serious* at the Powerhouse Theatre in Santa Monica.

**Schultz, Joseph** (B.A. 2003)

Joey recently directed and performed his original one man show, *The Book of Boyhood*, in its regional premiere. He is continuing to develop this piece as well as several other new works and is interested in exploratory techniques as a means of generating provocative new theatre. Joey also co-wrote *A New York Christmas Carol* which was produced by New York Theatre Experiment. Recent acting credits include *Aloha Say the Pretty Girls* and *The Glass Menagerie*. Joey is the Production Coordinator for New York Theatre Experiment.

**Stevenson, Jody** (B.A. 2003)

Jody made her LA stage debut in the world premier of the play *Common Bonds* at the Secret Rose Theater in LA. “The most compelling work is offered by Blair and Stevenson, a deaf actress who exudes a compelling and endearing feistiness. During the course of one failed prom night, they project the comic poignancy of an overprotective older brother watching his sister come of age right in front of him. They both sign and speak their dialogue, adding depth to their lifelong attachment to one another.” – Julio Martinez, *Variety Magazine*.

**Stokes, Anjeanette** (M.F.A. 2005)

Anjeanette was a venue technician from September to October at the 45th Street Theatre for the New York Musical Festival.

**Katie Whitlock** (Ph.D. 2004)

Katie accepted a tenure track position at Cal State Chico, where she'll be teaching Introduction to Theatre, Stage Management, Sound and History. She also plans to direct and design productions there.

## Friends News

**Kathy Burkman's** last production with Women at Play, the group she founded twelve years ago, *The Hungry Hearts*, opened in March 2006. The group has announced that it is dissolving after this production. “Women at Play pulls out all the stops for its farewell show, leaving fans hungry for more.” – Michael Grossberg, *The Columbus Dispatch*

**Mojmir Drvota** We are sad to report the passing of Professor Drvota. Many of you will have studied film with him in the Department of Photography and Cinema, and will recall with fondness learning of his full, rich life.

**Leah Hocking**, former OSU theatre student, received a rave review for her performance as Cleo (“Big D”) in *The Most Happy Fella* at the New York City Opera last week from *Variety*. “And it's the cast member with her feet planted firmly in musical comedy terrain that emerges as the most winning presence on-stage: Leah Hocking as Amy's brassy, flirtatious gal pal Cleo.” – David Rooney, *Variety*

**Kekoa Kaluhiokalani** was recognized at the Multicultural Center for his work in Theatre and Asian American Studies. He received the Academic Service and Outreach Award. The Multicultural Center hosts the annual awards ceremony to recognize students, faculty, staff and community members for their multicultural service.

**Dave Nickel** conducted 6 story telling sessions for students at the Knox County Alternative Center.

**Sue Ott Rowlands** is the interim Dean of the College of Arts and Sciences at The University of Toledo. She recently appeared as The Homebody in UT Department of Theatre and Film's production of *Homebody/Kabul* by Tony Kushner. The production was selected as a featured production at the regional Kennedy Center American College Theatre Festival in Bloomington, IL January 10-15, 2006.

**Wallingford, Dave**

Dave designed sound for *The Hungry Hearts*, Kathy Burkman's last production with Women at Play.



# South Africa



Tituba (Tshegofatso Mokone) accuses someone of witchcraft in *The Crucible* as Reverend Hale (Altus Theart), Giles Corey (Thys Dry) and Reverend Parris (Solomon Cupido) look on.



Abigail Williams (Steph Nel, left) and Betty Parris (Refilwe Mokgotloa, far right) are possessed as others watch in the TUT production of *The Crucible* directed by Lesley Ferris.

BELOW: Deputy Governor Danforth (Bradley Olivier) interrogates Mary Warren (Jane Dowd) as John Proctor (Moopi Mothibeli) and others look on in *The Crucible* at TUT.



## South Africa Exchange

By **Mark Shanda**, Professor and Chair  
and **Lesley Ferris**, Professor

Allan Munro (Ph.D. 1997) spent autumn quarter as a guest scholar in residence in the Department of Theatre. His visit marked the next phase in our ongoing partnership with Tshwane University of Technology (TUT), following up on Dan Gray's design residency over there during the summer of 2005. While in Columbus, Allan sought out opportunities for additional faculty and programmatic exchanges between the College of the Arts and TUT's Faculty of the Arts. He taught a graduate seminar in South African Theatre and an undergraduate honors course using the South African paradigm as the basis for the examples used in Introduction to Theatre. He also took advantage of his time with us to work to further develop his own research; including work on his book manuscript *Introduction to Research in the Arts*. Lesley Ferris was the third OSU faculty member to share in the TUT experience when she directed Miller's *The Crucible* with students from the Department of Drama at TUT. Her residency was in July and August and the production opened on August 24 and ran in the Breytenbach Theatre in Pretoria until September 2. The opening night was attended by numerous guests including the Executive Dean of the Faculty of the

Arts, Dr. H. M. Siryai, the head of the university, and representatives from the United States Embassy. In addition to directing, Lesley also gave two lectures, one on Adrienne Kennedy and one on Notting Hill Carnival to the Arts



Tshwane University of Technology Department of Drama faculty: Marth Munro, voice specialist, and Woutrine Theron, head of the department.

Research Seminar Series at TUT. **Gibson Cima** (M.A. student) who took Allan Munro's class on South African theatre at OSU, traveled to South Africa for research on Athol Fugard and during his residency was able to interview the majority of key players in contemporary South African theatre.



Stephanie Baartman and Moopi Mothibeli (Elizabeth and John Proctor) rehearse *The Crucible* at the the Arts campus of TUT.



Actors waiting to rehearse *The Crucible* on the Arts campus of TUT. From left to right, Innocent Siza (standing), Bongani Dube (seated on ground), Thabiso Mokone, Bradley Olivier, Moopi Mothibeli, Solomon Cupido.

# Carnival

## Carnival in London

By **Lesley Ferris**, Professor

In January 2006 the Department of Theatre hosted carnival scholar Ruth Tompsett (Middlesex University) and carnival artist Clary Salandy (Mahogany Arts Ltd.) for a ten-day residency. During this time they gave a public lecture in the Roy Bowen Theatre, a carnival workshop at the Wexner Center, and they worked closely with students in the Department of Design who are developing, with Lesley Ferris, Brian Stone (Design) and Dorothy Noyes (English) the Carnival Interactive, a multimedia computer program on London's Notting Hill Carnival. On August 28, the Carnival Interactive was beta-tested at the Caribbean Showcase at Hyde Park in London. Over the next several months, the innovatively designed program that creates a layered illusion of various three-dimensional carnival environments will be fine tuned and completed to be ready for *Midnight Robbers: The Artists of Notting Hill Carnival*, an exhibition curated by Lesley Ferris and Ruth Tompsett that will open in September 2007 at City Hall in London. A Faculty Innovation Grant from the Colleges of Arts and Sciences funded the project.



Clary Salandy (left) and Ruth Tompsett (right) discussing their work with the Carnival mass camp, Mahogany.



Brian Stone, leader of the computer design team of the Carnival Interactive, is interviewed during the Caribbean Showcase about the project.



Three computer consoles featuring the Carnival Interactive were kept busy all day by hundreds of visitors to the Education Zone, part of the Caribbean Showcase hosted by the Mayor of London at Hyde Park



Greg Owen (left) assists Clary Salandy (right) during her presentation about the Carnival mass camp, Mahogany.

# Port Clinton

## OSU / Port Clinton Performing Arts Festival

By **Mark Shanda**, Chair and Professor



Mary Yaw (left) and a future designer show off their latest creation at the 2005 OSU Port Clinton Performing Arts Festival.

The second annual OSU / Port Clinton Performing Arts Festival was held Sept 13 -18, 2005 in the northern Ohio town. The event, which featured the talent of students from Ohio State's College of the Arts, is a unique partnership between OSU Theatre, Ottawa County Extension and the Renaissance Corporation (a non-profit corporation established by Port Clinton business leaders).

The 2005 festival featured more than 120 students, faculty, staff and recent alumni in performances, exhibitions, workshops and interaction with the community. Student composers from the School of Music premiered new works, the graduate acting program presented a revival of their triumphant new Work, *Vaudeville*, dance enthusiasts enjoyed a performance by the Barbara Thatcher Dance company, and workshops were offered for people ages 12 to 99! And that's just a sampling of the more than 80 events scheduled during the five-day festival.



Mark Shanda, Tyler Seiple as Oliver Hazard Perry, Terry Chapman and Bo Leffler at the 2005 OSU Port Clinton Performing Arts

Jeanine Thompson (jumping) leads participants in one of her movement workshops at the 2005 OSU Port Clinton Performing Arts Festival.



# Roy Bowen

## Roy Bowen: A Celebration of a Life in the Theatre

By **Mark Shanda**, Chair and Professor

On January 7, 2006 the department hosted A Celebration of a Life in the Theatre for our good friend, Dr. Roy Bowen, who died on January 2 while visiting his daughter in New York City. Roy was the first Chair of the Department of Theatre when it was split off from the speech department and established many of the practices that are still followed today. The service and a time of sharing was held in the physical theatre space, on the stage, in the very theatre that was named in Roy's honor in 1999, the Roy Bowen Theatre. Dean Karen Bell, former chair Lesley Ferris, Joy Reilly and others shared kind words of remembrance and a presentation of Roy's career as archived in the Jerome Lawrence and Robert E. Lee Theatre Research Institute was played.

When Roy retired from OSU in 1977, Rosemary Curtin Hite of the *Citizen-Journal* wrote:

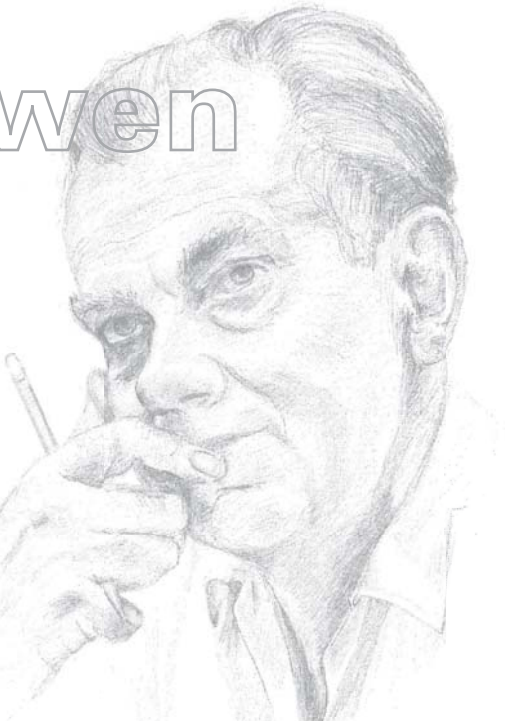
"The reality of Roy Bowen is something beyond the power of figures, degrees, associations, articles, lectures and all the other accoutrements of the academic life to express.

The key to Bowen's influence in Columbus theatre is his complete lack of pomposity, his thorough genuineness—rare commodities in a field where most participants are always "on", always striving for the telling phrase or prose.

Bowen communicates with everyone. The level, serious gaze, the quick responsive laugh – always the same whether the companion of a Broadway producer in to catch a look at a new play or a first-year student speechless at the contrast between first-rate university production and his old high school stage.

It is this ability, as well as his thorough professionalism and scholarship, that have enabled Bowen to bridge the gap between academe and the community."

All of us who knew Roy mourn his loss, but celebrate his legacy of scholarship and his impact on theatre education. Two funds have been established in Roy's honor. The Roy and Addeleen Bowen Scholarship fund which recognizes undergraduate student achievement, and the Roy Bowen Theatre Fund that



Roy Bowen illustration by John Crawford.

will provide ongoing support to the theatre named in his honor. When news of Roy's death at 93 years young reached central Ohio, the theatre community, friends who share a common bond of the stage, became a poorer place. However, we don't dwell on that loss, rather we focus on all that each and every one of us have gained by knowing and working with Roy. We all can recognize that each of us is just a little better for having shared some time with him.



Anne Bowen Paille, Roy Bowen's daughter, and Bowen Paille, her son, at the Roy Bowen memorial.



Peg and Ray Wehner share their memories of Roy Bowen at the memorial.

## Distinguished Scholar

### Professor Thomas Postlewait Receives Distinguished Scholar Award

Please join the Department of Theatre in congratulating Dr. Tom Postlewait on being named a University Distinguished Scholar, one of the highest awards a faculty member can receive at Ohio State!

Tom was surprised with the announcement by a delegation including University President Karen Holbrook, Executive Dean of Arts and Sciences Jacqueline Royster and Dean of the College of the Arts Karen Bell at the January 2006 faculty meeting.

OSU President, Karen Holbrook, presents Tom Postlewait with the University Distinguished Scholar Award.



Steve Pentak, Karen Bell, Karen Holbrook, Tom Postlewait, Jackie Royster and Robert McGrath at the presentation of the University Distinguished Scholar Award.

The Distinguished Scholar Award recognizes exceptional scholarly accomplishments by senior professors who have compiled a substantial body of research. The award is supported by the Office of Research with honoraria provided by The Ohio State University Foundation. Recipients are nominated by their departments and chosen by a committee of senior faculty, including several past recipients of the award. Distinguished Scholars receive a \$3,000 honorarium and a research grant of \$20,000 to be used over the next three years.

# New Faces

By **Megan Schutt**, M.F.A. 2006

## **Damian Bowerman**

Graduate Studies Coordinator and  
Publicity Coordinator



In July 2005, Damian returned to the Department of Theatre to serve as a liaison between the Department of Theatre and the Graduate School. Damian is a launch

pad for graduate students from admission through graduation. He is also responsible for designing posters and programs for several productions, editing *Encore* and coordinating department publicity.

As an actor, Damian has performed regionally and in Columbus at The Contemporary American Theatre Company (CATCO), Porthouse Theatre, Ohio Chautauqua, Wexner Center, Phoenix Theatre for Children, Barn Theatre, Huron Playhouse, Showboat Becky Thatcher and Findlay SummerStock. Recent performing projects include *The Underpants*, *Arsenic and Old Lace*, *Escanaba in da Moonlight* and *The Laramie Project* at CATCO. Damian is a member of the Actors' Equity Association. He lives in Columbus with his wife, Marlene, and their sons, Andrew and Aiden.

- B.A. The University of Findlay, 1995
- M.F.A. The Ohio State University, 2002

## **Dave Fisher**

Film/Video Lecturer and  
Buckeye TV Coordinator



Dave Fisher has worked at TV stations and "production houses" throughout Pennsylvania and Ohio. After working for WCMH NBC4 and Mills/James Produc-

tions, he moved over to WBNS 10TV, where he produced over 400 episodes of the 10TV KidsNews Network. This newscast for teens included "live shots" from all over Ohio, as well as live-via-satellite segments from Disneyworld in Florida.

After working as a producer/director at five network affiliated television stations, he had the desire to share some of his experience with "tomorrow's students of television."

- B.S. in Communications Art, University of Wisconsin, Madison

## **Beth Kattelman**- Lecturer/Theatre 100 Administrator



Dr. Kattelman has performed with various theatre companies throughout the Midwest including the ArtReach Touring Theatre, The Cincinnati Children's Theatre, The Reality Theatre, Act Out Productions and Actor's Theatre. She has also worked with Megan Terry at the Omaha Magic Theatre, where she served as company member and sound designer for productions of *Body Leaks* and *Sound Fields/Sound Minds*.

Dr. Kattelman co-founded Madcap Productions a Cincinnati based puppet-theatre company that continues to tour throughout the country. She also co-founded and served as Artistic Director of the New Venture Theatre, a Columbus company that was devoted to showcasing and developing new works. Dr. Kattelman currently is a member of the Advisory Board for the Columbus Gay and Lesbian Theatre Festival and is a contributor to the Gale Group's *Drama for Students* series. She has also written entries for numerous theatre encyclopedias and reference sources.

- B.A. Xavier University, 1981
- M.A. The Ohio State University, 1991
- Ph.D. The Ohio State University, 1999
- M.L.I.S. The Kent State University, 2005

## **Valerie Lucas**

Assistant Professor



Originally from California, Dr. Valerie Kaneko Lucas worked for many years in London as a theatre scholar, director and designer. Her international career as a

scholar and theatre director has encompassed England, Wales, Europe and the United States. Her previous posts have been at Bath Spa University, Essex University, Middlesex University and Roehampton University.

As a theatre practitioner, she trained at the Sherman Theatre Cardiff, the Royal National Theatre, the Welsh National Opera and worked in mask and devised theatres at Bonn's Theatre Die Raben and Hijinx Theatre. Her creative research for both mainstream theatre and community-based arts groups

includes site-specific performance, devised performance, translation, adaptation and drama for development. Her design work has included projects for intercultural awareness, multi-cultural theatres, and work with refugees and at-risk youth. Her directorial work includes the foundation of Theatre Valise, a women's theatre company and a commission by the British Council to create a five-year intercultural drama program. Valerie is a member of the Executive Committee of the Society for Theatre Research (London) and Co-convenor of the Scenography Working Group of the International Federation for Theatre Research. Her research focuses upon representations of race, ethnicity and gender in contemporary theatre and early modern drama, and in the relationship of scenographic practice to image, site and memory.

- B.A. University of California, Santa Cruz
- POSTGRADUATE Diploma in Theatre Studies - University of Wales Cardiff
- M.A. University of Essex
- Ph.D. University of Essex

## **Orville Martin**

Library Associate at the Jerome Lawrence  
and Robert E. Lee Theatre Research Institute



Orville came to TRI from the former Eisenhower National Clearinghouse, where he worked as a reference librarian. Before ENC Orville worked in a variety of positions,

over time, in The Ohio State University Libraries: Inter-Library Loan, Main Circulation, Collection Maintenance, Microforms and Periodicals. Orville began his library career in Main Circulation in 1979 as a student employee.

- B.A. The Ohio State University, 1989
- M.L.S. The Kent State University, 1996

## **Janet Parrott**

Assistant Professor



Janet Parrott is a graduate of The Ohio State University with degrees in Cultural Anthropology and Filmmaking. Her films have been shown with the Chicago

filmmakers Women Make Movies, The Black Maria Film festival and the Three Rivers Arts

Festival just to name a few. Her versatility is shown by working both in the corporate and art worlds as a director, producer and editor. She is teaching film and video production in the department while currently directing a documentary about Aids and Hospice in South Africa.

- B.A. The Ohio State University, 1982
- M.A. The Ohio State University, 1992

### Jan Woods

Costume Studio Supervisor



Jan joined the OSU Production Staff this fall as the Costume Studio Supervisor. She received her M.F.A. from Penn State University in Costume Design and

Technology. Previously, Jan taught costuming and stage makeup at Penn State University, the University of Colorado at Boulder and

Collin County Community College in Plano, Texas, and also managed the costume shop at the University of Colorado. She completed an Internship in Theatrical Millinery with Lynn Mackey Studio in New York. Jan has worked as a draper at the Utah Shakespearean Festival, Colorado Shakespeare Festival, Central City (CO) Opera, Denver Center Theatre Company, Irene Corey Design Associate and J. Ahrens' Customworks. She has designed costumes for Theatre Britain and Uptown Player in Dallas and Plano East High School in Texas, Penn State University, Shakespeare at the Palmer in Pennsylvania, the University of Colorado at Boulder and at Denver, and Director's Theatre in Boulder, Colorado. Her avocation is flying her hot air balloon, "The Adventure."

- B.S. Indiana University
- B.S. in Accounting, Metropolitan State College, Denver, CO
- M.H. University of Colorado, 1998
- M.F.A. Penn State University, 2003

### Prague Puppets

by Jennifer Stoessner, Ph.D. Student

As a puppeteer, traveling to Prague was like a spiritual homecoming. After all, it was in Prague in 1929 that puppeteers from seven countries banded together to form UNIMA (Union International de la Marionette), an organization of which I am a member. I was understandably excited then, when I heard that we would be not only spending ten glorious days in the Czech Republic but that one of the performances we were to see was a marionette performance of Mozart's *Don Giovanni*. I also got to see the statue commemorating the founding of UNIMA outside the National Marionette Theatre where it plays.

Prague was absolutely covered in puppets. Nearly every shop had the word "loutka" on its sign and they all sold marionettes. Never had I seen such a widespread celebration of puppetry in everyday venues. This realization brought with it a problem. Which puppet would I bring home? All of my traveling companions had been fired up by the preponderance of puppets and purchased them eagerly.

I was overwhelmed by the selection and could not find just what I was looking for. There I was, a professional puppeteer, and I couldn't find a puppet that I *had* to buy. It made me feel oddly dejected.

The happiest spot for me on the entire tour was the Fairy Tale House and Marionette Museum in Český Krumlov. Housed in this three story building were examples of historical Czech and international puppets as well as puppets by local artists for sale. The GIANT baby that awaited me in the attic portion of the museum astonished me. It could easily eat my entire head in a gulp! I also had the rare pleasure of seeing a pair of "original" Spejbl and Hurvínek puppets, the Czech national puppet icons. It was here that I finally bought a beautiful marionette and felt a relieved satisfaction. When we went to *Don Giovanni* the following night, I realized what the trip had done. Not only did it introduce my friends to the power of the puppet on stage, I reaffirmed my belief in that power as well.

### Chris Zinkon

Assistant Technical Director



After graduating from OSU in 1996 with a B.A. in Theatre, he was hired as the Technical Director for the Tony Award-winning Alley Theatre in Houston, Texas. After an

eight year stint with the Alley, and following the birth of their son Henry, Chris and his wife Ardra (Stanski, B.A. 1997) have returned to their hometown of Columbus. One of his main interests involves the development and implementation of "theatre friendly" automation control systems into production.

- B.A. The Ohio State University, 1996



Faculty and students from Theatre 694 during their visit to Prague posing in front of a volunteer fire station near Borotin. Jaroslav Malina is the artist of the painting of the Czech patron saint of firefighters.



Puppets from the Fairy Tale House and Marionette Museum in Cesky Krumlov.



The giant baby puppet in the attic of the Marionette Museum in Český Krumlov.

# The Ten



Adrian Brown



Lise Evans



Antonio "Digla" Garcia



Jason Hedden



Tanya Chu McBride



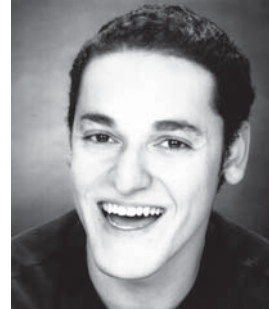
Robin Post



Chris Roche



Megan Faye Schutt



Anthony Trujillo



Blair Wing

## **Adrian Brown**

Adrian is contemplating moving to Chicago to start a new company which focuses on the creation of new work.

## **Lise Evans**

Lise has been auditioning in Ohio, Massachusetts and New York for acting jobs. She doesn't know yet where she's going next, but is pursuing many exciting options that include Chicago and New York.

## **Antonio "Digla" Garcia**

Antonio will be staying in Columbus for a while and hopes to work with some of the professional theatre companies in the area.

## **Jason Hedden**

For the 2006-2007 school year, Jason will be teaching acting and directing two shows at Monte Vista Christian School in Santa Cruz, CA. He plans to continue pursuing his acting career in central CA as well as teach. Before he heads out to California this fall, he will be supervising an independent film being shot in Columbus over the summer.

## **Tanya Chu McBride**

Tanya is headed for Chicago! Once there, she hopes to find much work in theatre, film/tv, and/or voice-over work. She hopes that she can use the new work creation skills she has learned at OSU to find work with The Neo-Futurists. This is her current pipedream. She has an internship with them starting in the fall. She is also being represented by Lewis Chambers of the Bethel Theatrical Agency in New York City.

## **Robin Post**

Robin will be teaching this summer as a Guest Lecturer in Acting at OSU. She will also be presenting at the VASTA and ATHE conferences, and then plans to pursue work in academia.

## **Chris Roche**

Chris will be teaching this summer as a Guest Lecturer in Acting at OSU and will be presenting a paper at the ATHE conference in Chicago in early August. He intends to put his Equity card to use in the coming months in hope of booking some acting gigs. He is also being represented by Lewis Chambers of the Bethel Theatrical Agency in New York City.

## **Megan Faye Schutt**

Megan is moving to Chicago directly after graduation to complete an education and outreach internship with the Lookingglass Theatre Ensemble. She plans on applying her OSU experience in acting, ensemble creation of new work and teaching theatre to find work in the Chicago theatre community. She is also being represented by Lewis Chambers of the Bethel Theatrical Agency in New York City.

## **Anthony Trujillo**

Tony will be moving to Cincinnati where he will be a member of the 2006-2007 Acting Apprentice Company at the Tony Award winning Cincinnati Playhouse in the Park.

## **Blair Wing**

Blair is working with Dancing Wheels, a Cleveland based dance company, starting in April 2006 and getting her Ph.D. from University of East London. She will be researching "Women with Mixed Abilities in Theatre and Dance."

## CAPA/OSU Experience

By **Betsy Pandora**, B.A. 2006

I completed a six-month marketing internship with CAPA in March 2006. At the conclusion of my internship, I was hired to the marketing department staff to support a maternity leave through the end of May. My passion for research, learning and communicating with people is what initially led me to the performing arts and continues to navigate me today.

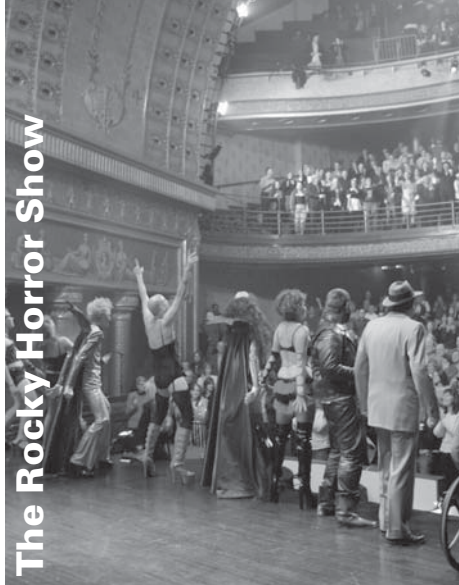
While at OSU my interests transitioned from being a performer to being an arts administrator. My goals are to attend graduate school in either an arts admin/cultural policy program or an M.B.A. program. I am very interested in the cultural and artistic development of cities, specifically in cultural planning. I have aspirations to some day manage a large scale arts organization or to even become a producer of theatrical work. The OSU theatre family, and really all of the arts organizations I have worked with in Central Ohio, have been fully supportive of my professional development. Columbus has amazing artistic offerings and I believe that major advancements will be made by our arts organizations within the next five years. It is my goal to be a part of that development.

I have just accepted a job as Education Assistant for the Education Department at the Wexner Center for the Arts.



Mark Shanda recognizes Betsy Pandora for her participation in the Denman Research Forum. Betsy received 4th Place in Arts & Architecture for her work on *Every Theatre Should Be A Community Theatre: Branding Lessons From Columbus, Ohio*

## The Rocky Horror Show



*Adding to the ambiance of the production is the unique set. "Craptastic," (Tyler) Seiple said. "That is what we all lovingly call it. It's dingy and run down but it is such an amazing blend."*

### Worthington News

November 9, 2005  
Brittinity Dunlap

*Certainly fans of the film version will be eager to take a "jump to the left" and a "step to the right" into the Southern Theatre to applaud Ohio State University's fun-loving revival of the staged version.*

*...OSU's handsome production...will give everyone except resolute prudes a good time.*

*Director Mandy Fox and a top-notch design team give a provocative edge to the campy musical spoof...*

*...this trashy, tawdry show fits like a jewel—well, OK, a rhinestone—inside the Southern Theatre's jewel box.*

*Daniel Matthew's jokey scenic and lighting design blends motifs from old horror and sci-fi films to evoke a haunted house that's out of this world.*

*Nor would the production be as fun or as full of pop-culture resonance without Mary Elizabeth Yaw's sequined costumes, leather-strapped lingerie and bright wigs; or James Knapp's evocative sound design.*

### The Columbus Dispatch

November 19, 2005  
Michael Grossberg

## "Performing in 'Rocky' at the Southern" Spring Quarter, 2005

By **Chris Roche**, M.F.A. 2006

This past autumn the OSU Department of Theatre and the Columbus Association for the Performing Arts (CAPA) collaborated on a joint production of *The Rocky Horror Show* at the historic Southern Theatre in downtown Columbus. It was a blast! First let me say that being able to play Dr. Frank-N-Furter was a dream come true. I remember seeing *Rocky Horror* at the age of sixteen and thinking, Tim Curry is amazing! From that moment forward I had hoped to add this role to my résumé. Thanks to OSU this dream was fully realized. Not only was I able to play the gorgeously-gruesome Frank-N-Furter, but we performed in one of the oldest theatres in the country. I remember walking backstage of the Southern and running my fingers along the crumbling brick, and thinking this is where the Barrymores and Sarah Bernhart performed. It was an amazing experience. I would be remiss if I didn't say thank you to not only the Department of Theatre and CAPA, but also to the College of the Arts, and the entire OSU community. I hope future students get a chance to perform in such a venue. It was a gift. Thanks Again and...GO BUCKS!!



Chris Roche as Frank-N-Furter in *The Rocky Horror Show*.

*Who could have predicted how nicely their well-designed and lively The Rocky Horror Show would fit into the Southern Theatre?*

### The Columbus Dispatch

December 25, 2005  
Michael Grossberg



department of theatre  
*college of the arts*

Non-Profit Org.  
U.S. Postage  
**PAID**  
Columbus, OH  
Permit No. 711

# encore

1089 Drake Performance and Event Center  
1849 Cannon Drive  
Columbus, OH 43210-1266

02800-011000-61801  
Address Service Requested



↑ A scene from *The Cradle Will Rock*, a joint production with the Department of Theatre and the School of Music.